

## ARG81845 Mouse MFG-E8 / Lactadherin ELISA Kit

Package: 96 wells  
Store at: 4°C

### Component

Cat. No.	Component Name	Package	Temp
ARG81845-001	Antibody-coated microplate	8 X 12 strips	4°C. Unused strips should be sealed tightly in the air-tight pouch.
ARG81845-002	Standard	2 X 10 ng/vial	4°C
ARG81845-003	Standard/Sample diluent	30 ml (Ready to use)	4°C
ARG81845-004	Antibody conjugate concentrate (100X)	1 vial (100 µl)	4°C
ARG81845-005	Antibody diluent buffer	12 ml (Ready to use)	4°C
ARG81845-006	HRP-Streptavidin concentrate (100X)	1 vial (100 µl)	4°C
ARG81845-007	HRP-Streptavidin diluent buffer	12 ml (Ready to use)	4°C
ARG81845-008	25X Wash buffer	20 ml	4°C
ARG81845-009	TMB substrate	10 ml (Ready to use)	4°C (Protect from light)
ARG81845-010	STOP solution	10 ml (Ready to use)	4°C
ARG81845-011	Plate sealer	4 strips	Room temperature

### Summary

Product Description	ARG81845 Mouse MFG-E8 / Lactadherin ELISA Kit is an Enzyme Immunoassay kit for the quantification of Mouse MFG-E8 / Lactadherin in serum, plasma (heparin, EDTA) and cell culture supernatants.
Tested Reactivity	Ms
Tested Application	ELISA
Specificity	There is no detectable cross-reactivity with other relevant proteins.
Target Name	MFG-E8 / Lactadherin
Conjugation	HRP
Conjugation Note	Substrate: TMB and read at 450 nm.
Sensitivity	31.25 pg/ml
Sample Type	Serum, plasma (heparin, EDTA) and cell culture supernatants.
Standard Range	62.5 - 4000 pg/ml
Sample Volume	100 µl

Precision	Intra-Assay CV: 6.4%; Inter-Assay CV: 7.4%
Alternate Names	SPAG10; MFGM; HsT19888; HMFG; Milk fat globule-EGF factor 8; MFG-E8; BA46; hP47; EDIL1; Lactadherin; OAcGD3S; Breast epithelial antigen BA46; SED1

## Application Instructions

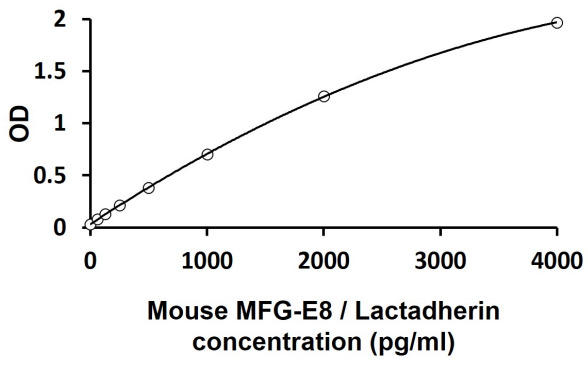
Assay Time	~ 5 hours
------------	-----------

## Properties

Form	96 well
Storage instruction	Store the kit at 2-8°C. Keep microplate wells sealed in a dry bag with desiccants. Do not expose test reagents to heat, sun or strong light during storage and usage. Please refer to the product user manual for detail temperatures of the components.
Note	For laboratory research only, not for drug, diagnostic or other use.

## Bioinformation

Gene Symbol	MFGE8
Gene Full Name	milk fat globule-EGF factor 8 protein
Background	This gene encodes a preproprotein that is proteolytically processed to form multiple protein products. The major encoded protein product, lactadherin, is a membrane glycoprotein that promotes phagocytosis of apoptotic cells. This protein has also been implicated in wound healing, autoimmune disease, and cancer. Lactadherin can be further processed to form a smaller cleavage product, medin, which comprises the major protein component of aortic medial amyloid (AMA). Alternative splicing results in multiple transcript variants. [provided by RefSeq, Jul 2015]
Function	Plays an important role in the maintenance of intestinal epithelial homeostasis and the promotion of mucosal healing. Promotes VEGF-dependent neovascularization (By similarity). Contributes to phagocytic removal of apoptotic cells in many tissues. Specific ligand for the alpha-v/beta-3 and alpha-v/beta-5 receptors. Also binds to phosphatidylserine-enriched cell surfaces in a receptor-independent manner. Zona pellucida-binding protein which may play a role in gamete interaction. Binds specifically to rotavirus and inhibits its replication.  Medin is the main constituent of aortic medial amyloid. [UniProt]
Highlight	Related products: <a href="#">MFGE8 antibodies</a> ; <a href="#">MFGE8 ELISA Kits</a> ; New ELISA data calculation tool: <a href="#">Simplify the ELISA analysis by GainData</a>
PTM	Medin has a ragged N-terminus with minor species starting at Pro-264 and Gly-273. [UniProt]



ARG81845 Mouse MFG-E8 / Lactadherin ELISA Kit standard curve image

ARG81845 Mouse MFG-E8 / Lactadherin ELISA Kit results of a typical standard run with optical density reading at 450 nm.