

ARG81782 Rat CD62L / L-Selectin ELISA Kit

Package: 96 wells
Store at: 4°C

Component

Cat. No.	Component Name	Package	Temp
ARG81782-001	Antibody-coated microplate	8 X 12 strips	4°C. Unused strips should be sealed tightly in the air-tight pouch.
ARG81782-002	Standard	2 X 40 ng/vial	4°C
ARG81782-003	Standard/Sample diluent	30 ml (Ready to use)	4°C
ARG81782-004	Antibody conjugate concentrate (100X)	1 vial (100 µl)	4°C
ARG81782-005	Antibody diluent buffer	12 ml (Ready to use)	4°C
ARG81782-006	HRP-Streptavidin concentrate (100X)	1 vial (100 µl)	4°C
ARG81782-007	HRP-Streptavidin diluent buffer	12 ml (Ready to use)	4°C
ARG81782-008	25X Wash buffer	20 ml	4°C
ARG81782-009	TMB substrate	10 ml (Ready to use)	4°C (Protect from light)
ARG81782-010	STOP solution	10 ml (Ready to use)	4°C
ARG81782-011	Plate sealer	4 strips	Room temperature

Summary

Product Description	ARG81782 Rat CD62L / L-Selectin ELISA Kit is an Enzyme Immunoassay kit for the quantification of Rat soluble CD62L / L-Selectin in serum, plasma (heparin, EDTA) and cell culture supernatants.
Tested Reactivity	Rat
Tested Application	ELISA
Specificity	There is no detectable cross-reactivity with other relevant proteins.
Target Name	CD62L / L-Selectin
Conjugation	HRP
Conjugation Note	Substrate: TMB and read at 450 nm.
Sensitivity	312.5 pg/ml
Sample Type	Serum, plasma (heparin, EDTA) and cell culture supernatants.
Standard Range	625 - 40000 pg/ml
Sample Volume	100 µl

Precision	Intra-Assay CV: 5.3%; Inter-Assay CV: 6.0%
Alternate Names	Leukocyte surface antigen Leu-8; Leukocyte adhesion molecule 1; CD antigen CD62L; PLNHR; LSEL; CD62L; Leukocyte-endothelial cell adhesion molecule 1; L-selectin; LAM1; LNHR; TQ1; CD62 antigen-like family member L; gp90-MEL; Lymph node homing receptor; LYAM1; LECAM1; LEU8; LAM-1

Application Instructions

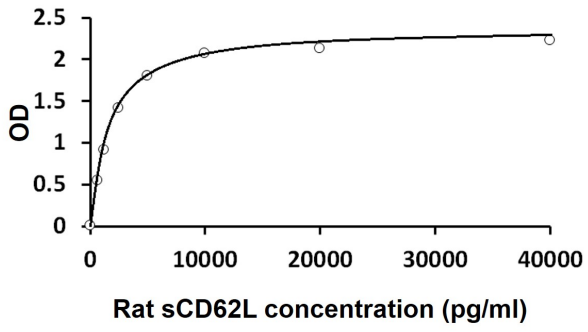
Assay Time	~ 5 hours
------------	-----------

Properties

Form	96 well
Storage instruction	Store the kit at 2-8°C. Keep microplate wells sealed in a dry bag with desiccants. Do not expose test reagents to heat, sun or strong light during storage and usage. Please refer to the product user manual for detail temperatures of the components.
Note	For laboratory research only, not for drug, diagnostic or other use.

Bioinformation

Gene Symbol	SELL
Gene Full Name	selectin L
Background	This gene encodes a cell surface adhesion molecule that belongs to a family of adhesion/homing receptors. The encoded protein contains a C-type lectin-like domain, a calcium-binding epidermal growth factor-like domain, and two short complement-like repeats. The gene product is required for binding and subsequent rolling of leucocytes on endothelial cells, facilitating their migration into secondary lymphoid organs and inflammation sites. Single-nucleotide polymorphisms in this gene have been associated with various diseases including immunoglobulin A nephropathy. Alternatively spliced transcript variants have been found for this gene. [provided by RefSeq, Oct 2009]
Function	Cell surface adhesion protein. Mediates the adherence of lymphocytes to endothelial cells of high endothelial venules in peripheral lymph nodes. Promotes initial tethering and rolling of leukocytes in endothelia. [UniProt]
Highlight	Related products: CD62L antibodies ; CD62L ELISA Kits ; New ELISA data calculation tool: Simplify the ELISA analysis by GainData



ARG81782 Rat CD62L / L-Selectin ELISA Kit standard curve image

ARG81782 Rat CD62L / L-Selectin ELISA Kit results of a typical standard run with optical density reading at 450 nm.
