

## ARG81683 Mouse CCL1 / I-309 ELISA Kit

Package: 96 wells  
Store at: 4°C

### Component

Cat. No.	Component Name	Package	Temp
ARG81683-001	Antibody-coated microplate	8 X 12 strips	4°C. Unused strips should be sealed tightly in the air-tight pouch.
ARG81683-002	Standard	2 X 10 ng/vial	4°C
ARG81683-003	Standard/Sample diluent	30 ml (Ready to use)	4°C
ARG81683-004	Antibody conjugate concentrate (100X)	1 vial (100 µl)	4°C
ARG81683-005	Antibody diluent buffer	12 ml (Ready to use)	4°C
ARG81683-006	HRP-Streptavidin concentrate (100X)	1 vial (100 µl)	4°C
ARG81683-007	HRP-Streptavidin diluent buffer	12 ml (Ready to use)	4°C
ARG81683-008	25X Wash buffer	20 ml	4°C
ARG81683-009	TMB substrate	10 ml (Ready to use)	4°C (Protect from light)
ARG81683-010	STOP solution	10 ml (Ready to use)	4°C
ARG81683-011	Plate sealer	4 strips	Room temperature

### Summary

Product Description	ARG81683 Mouse CCL1 / I-309 ELISA Kit is an Enzyme Immunoassay kit for the quantification of Mouse CCL1 / I-309 in serum, plasma (heparin, EDTA) and cell culture supernatants.
Tested Reactivity	Ms
Tested Application	ELISA
Specificity	There is no detectable cross-reactivity with other relevant proteins.
Target Name	CCL1 / I-309
Conjugation	HRP
Conjugation Note	Substrate: TMB and read at 450 nm.
Sensitivity	3.9 pg/ml
Sample Type	Serum, plasma (heparin, EDTA) and cell culture supernatants.
Standard Range	7.8 - 500 pg/ml
Sample Volume	100 µl

Precision	Intra-Assay CV: 6.2%; Inter-Assay CV: 7.5%
Alternate Names	TCA3; T lymphocyte-secreted protein I-309; S1Se; P500; Small-inducible cytokine A1; I-309; SCYA1; C-C motif chemokine 1

## Application Instructions

Assay Time ~ 5 hours

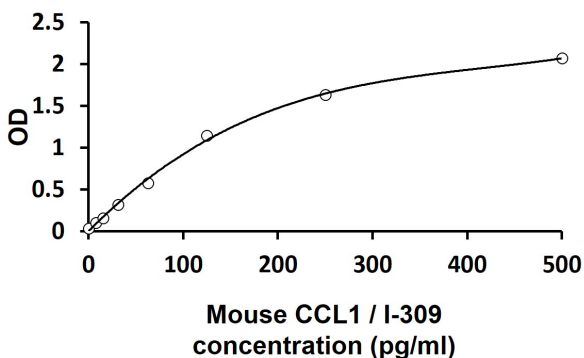
## Properties

Form	96 well
Storage instruction	Store the kit at 2-8°C. Keep microplate wells sealed in a dry bag with desiccants. Do not expose test reagents to heat, sun or strong light during storage and usage. Please refer to the product user manual for detail temperatures of the components.
Note	For laboratory research only, not for drug, diagnostic or other use.

## Bioinformation

Gene Symbol	CCL1
Gene Full Name	chemokine (C-C motif) ligand 1
Background	This antimicrobial gene is one of several chemokine genes clustered on the q-arm of chromosome 17. Chemokines form a superfamily of secreted proteins involved in immunoregulatory and inflammatory processes. The superfamily is divided into four subfamilies based on the arrangement of the N-terminal cysteine residues of the mature peptide. This chemokine, a member of the CC subfamily, is secreted by activated T cells and displays chemotactic activity for monocytes but not for neutrophils. It binds to the chemokine (C-C motif) receptor 8. [provided by RefSeq, Sep 2014]
Function	Cytokine that is chemotactic for monocytes but not for neutrophils. Binds to CCR8. [UniProt]
Highlight	Related products: <a href="#">CCL1 antibodies</a> ; <a href="#">CCL1 ELISA Kits</a> ; New ELISA data calculation tool: <a href="#">Simplify the ELISA analysis by GainData</a>

## Images



ARG81683 Mouse CCL1 / I-309 ELISA Kit standard curve image

ARG81683 Mouse CCL1 / I-309 ELISA Kit results of a typical standard run with optical density reading at 450 nm.