

ARG81533 Human Midkine ELISA Kit

Package: 96 wells
Store at: 4°C

Component

| Cat. No. | Component Name | Package | Temp |
|--------------|---------------------------------------|----------------------|---|
| ARG81533-001 | Antibody-coated microplate | 8 X 12 strips | 4°C. Unused strips should be sealed tightly in the air-tight pouch. |
| ARG81533-002 | Standard | 2 X 10 ng/vial | 4°C |
| ARG81533-003 | Standard/Sample diluent | 30 ml (Ready to use) | 4°C |
| ARG81533-004 | Antibody conjugate concentrate (100X) | 1 vial (100 µl) | 4°C |
| ARG81533-005 | Antibody diluent buffer | 12 ml (Ready to use) | 4°C |
| ARG81533-006 | HRP-Streptavidin concentrate (100X) | 1 vial (100 µl) | 4°C |
| ARG81533-007 | HRP-Streptavidin diluent buffer | 12 ml (Ready to use) | 4°C |
| ARG81533-008 | 25X Wash buffer | 20 ml | 4°C |
| ARG81533-009 | TMB substrate | 10 ml (Ready to use) | 4°C (Protect from light) |
| ARG81533-010 | STOP solution | 10 ml (Ready to use) | 4°C |
| ARG81533-011 | Plate sealer | 4 strips | Room temperature |

Summary

| | |
|---------------------|---|
| Product Description | ARG81533 Human Midkine ELISA Kit is an Enzyme Immunoassay kit for the quantification of Human Midkine in serum, plasma (heparin, EDTA) and cell culture supernatants. |
| Tested Reactivity | Hu |
| Tested Application | ELISA |
| Specificity | There is no detectable cross-reactivity with other relevant proteins. |
| Target Name | Midkine |
| Conjugation | HRP |
| Conjugation Note | Substrate: TMB and read at 450 nm. |
| Sensitivity | 39 pg/ml |
| Sample Type | Serum, plasma (heparin, EDTA) and cell culture supernatants. |
| Standard Range | 78 - 5000 pg/ml |
| Sample Volume | 100 µl |

| | |
|-----------------|--|
| Precision | Intra-Assay CV: 5.4% Inter-Assay CV: 6.2% |
| Alternate Names | ARAP; Neurite outgrowth-promoting protein; Midkine; MK; Neurite outgrowth-promoting factor 2; Amphiregulin-associated protein; Midgestation and kidney protein; NRG2 |

Application Instructions

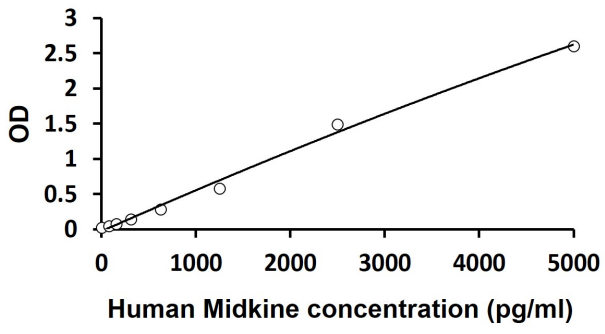
| | |
|------------|-----------|
| Assay Time | ~ 5 hours |
|------------|-----------|

Properties

| | |
|---------------------|--|
| Form | 96 well |
| Storage instruction | Store the kit at 2-8°C. Keep microplate wells sealed in a dry bag with desiccants. Do not expose test reagents to heat, sun or strong light during storage and usage. Please refer to the product user manual for detail temperatures of the components. |
| Note | For laboratory research only, not for drug, diagnostic or other use. |

Bioinformation

| | |
|----------------|---|
| Gene Symbol | MDK |
| Gene Full Name | midkine (neurite growth-promoting factor 2) |
| Background | This gene encodes a member of a small family of secreted growth factors that binds heparin and responds to retinoic acid. The encoded protein promotes cell growth, migration, and angiogenesis, in particular during tumorigenesis. This gene has been targeted as a therapeutic for a variety of different disorders. Alternatively spliced transcript variants encoding multiple isoforms have been observed. [provided by RefSeq, Jul 2012] |
| Function | Developmentally regulated, secreted growth factor homologous to pleiotrophin (PTN), which has heparin binding activity. Binds anaplastic lymphoma kinase (ALK) which induces ALK activation and subsequent phosphorylation of the insulin receptor substrate (IRS1), followed by the activation of mitogen-activated protein kinase (MAPK) and PI3-kinase, and the induction of cell proliferation. Involved in neointima formation after arterial injury, possibly by mediating leukocyte recruitment. Also involved in early fetal adrenal gland development (By similarity). [UniProt] |
| Highlight | Related products: Midkine antibodies ; Midkine ELISA Kits ; New ELISA data calculation tool: Simplify the ELISA analysis by GainData |



ARG81533 Human Midkine ELISA Kit standard curve image

ARG81533 Human Midkine ELISA Kit results of a typical standard run with optical density reading at 450 nm.