

## ARG81468 Human SERPINA4 / Kallistatin ELISA Kit

Package: 96 wells  
Store at: 4°C

### Component

Cat. No.	Component Name	Package	Temp
ARG81468-001	Antibody-coated microplate	8 X 12 strips	4°C. Unused strips should be sealed tightly in the air-tight pouch.
ARG81468-002	Standard	2 X 10 ng/vial	4°C
ARG81468-003	Standard/Sample diluent	30 ml (Ready to use)	4°C
ARG81468-004	Antibody conjugate concentrate (100X)	1 vial (100 µl)	4°C
ARG81468-005	Antibody diluent buffer	12 ml (Ready to use)	4°C
ARG81468-006	HRP-Streptavidin concentrate (100X)	1 vial (100 µl)	4°C
ARG81468-007	HRP-Streptavidin diluent buffer	12 ml (Ready to use)	4°C
ARG81468-008	25X Wash buffer	20 ml	4°C
ARG81468-009	TMB substrate	10 ml (Ready to use)	4°C (Protect from light)
ARG81468-010	STOP solution	10 ml (Ready to use)	4°C
ARG81468-011	Plate sealer	4 strips	Room temperature

### Summary

Product Description	ARG81468 Human SERPINA4 / Kallistatin ELISA Kit is an Enzyme Immunoassay kit for the quantification of Human SERPINA4 / Kallistatin in serum, plasma (heparin, EDTA) and cell culture supernatants.
Tested Reactivity	Hu
Tested Application	ELISA
Specificity	There is no detectable cross-reactivity with other relevant proteins.
Target Name	SERPINA4 / Kallistatin
Conjugation	HRP
Conjugation Note	Substrate: TMB and read at 450 nm.
Sensitivity	78 pg/ml
Sample Type	Serum, plasma (heparin, EDTA) and cell culture supernatants.
Standard Range	156 - 10000 pg/ml
Sample Volume	100 µl

Precision	Intra-Assay CV: 5.1% Inter-Assay CV: 5.9%
Alternate Names	KST; PI-4; kallistatin; Peptidase inhibitor 4; KLST; KAL; Serpin A4; Kallikrein inhibitor; PI4; Kallistatin

## Application Instructions

Assay Time	~ 5 hours
------------	-----------

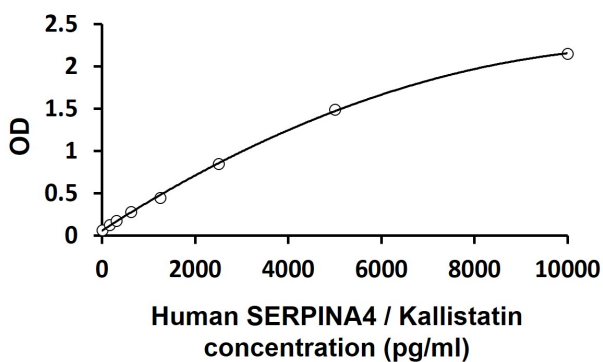
## Properties

Form	96 well
Storage instruction	Store the kit at 2-8°C. Keep microplate wells sealed in a dry bag with desiccants. Do not expose test reagents to heat, sun or strong light during storage and usage. Please refer to the product user manual for detail temperatures of the components.
Note	For laboratory research only, not for drug, diagnostic or other use.

## Bioinformation

Gene Symbol	SERPINA4
Gene Full Name	serpin peptidase inhibitor, clade A (alpha-1 antitrypsin), member 4
Function	Inhibits human amidolytic and kininogenase activities of tissue kallikrein. Inhibition is achieved by formation of an equimolar, heat- and SDS-stable complex between the inhibitor and the enzyme, and generation of a small C-terminal fragment of the inhibitor due to cleavage at the reactive site by tissue kallikrein. [UniProt]
Highlight	Related products: <a href="#">Serpin antibodies</a> ; <a href="#">Serpin ELISA Kits</a> ; New ELISA data calculation tool: <a href="#">Simplify the ELISA analysis by GainData</a>
PTM	The N-terminus is blocked. [UniProt]

## Images



ARG81468 Human SERPINA4 / Kallistatin ELISA Kit standard curve image

ARG81468 Human SERPINA4 / Kallistatin ELISA Kit results of a typical standard run with optical density reading at 450 nm.