

ARG81406 Human CCL24 / Eotaxin 2 ELISA Kit

Package: 96 wells
Store at: 4°C

Component

Cat. No.	Component Name	Package	Temp
ARG81406-001	Antibody-coated microplate	8 X 12 strips	4°C. Unused strips should be sealed tightly in the air-tight pouch.
ARG81406-002	Standard	2 X 10 ng/vial	4°C
ARG81406-003	Standard/Sample diluent	30 ml (Ready to use)	4°C
ARG81406-004	Antibody conjugate concentrate (100X)	1 vial (100 µl)	4°C
ARG81406-005	Antibody diluent buffer	12 ml (Ready to use)	4°C
ARG81406-006	HRP-Streptavidin concentrate (100X)	1 vial (100 µl)	4°C
ARG81406-007	HRP-Streptavidin diluent buffer	12 ml (Ready to use)	4°C
ARG81406-008	25X Wash buffer	20 ml	4°C
ARG81406-009	TMB substrate	10 ml (Ready to use)	4°C (Protect from light)
ARG81406-010	STOP solution	10 ml (Ready to use)	4°C
ARG81406-011	Plate sealer	4 strips	Room temperature

Summary

Product Description	ARG81406 Human CCL24 / Eotaxin 2 ELISA Kit is an Enzyme Immunoassay kit for the quantification of Human CCL24 / Eotaxin 2 in serum, plasma (heparin, EDTA) and cell culture supernatants.
Tested Reactivity	Hu
Tested Application	ELISA
Specificity	There is no detectable cross-reactivity with other relevant proteins.
Target Name	CCL24 / Eotaxin 2
Conjugation	HRP
Conjugation Note	Substrate: TMB and read at 450 nm.
Sensitivity	15.6 pg/ml
Sample Type	Serum, plasma (heparin, EDTA) and cell culture supernatants.
Standard Range	31.2 - 2000 pg/ml
Sample Volume	100 µl

Precision	Intra-Assay CV: 5.0% Inter-Assay CV: 6.2%
Alternate Names	CK-beta-6; SCYA24; Ckb-6; MPIF2; Small-inducible cytokine A24; MPIF-2; Eosinophil chemotactic protein 2; Myeloid progenitor inhibitory factor 2; C-C motif chemokine 24; Eotaxin-2

Application Instructions

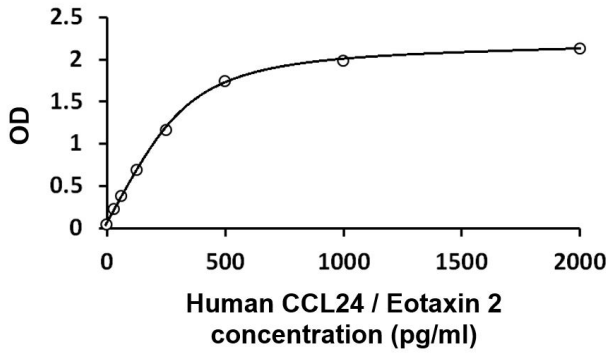
Assay Time	~ 5 hours
------------	-----------

Properties

Form	96 well
Storage instruction	Store the kit at 2-8°C. Keep microplate wells sealed in a dry bag with desiccants. Do not expose test reagents to heat, sun or strong light during storage and usage. Please refer to the product user manual for detail temperatures of the components.
Note	For laboratory research only, not for drug, diagnostic or other use.

Bioinformation

Gene Symbol	CCL24
Gene Full Name	chemokine (C-C motif) ligand 24
Background	This gene belongs to the subfamily of small cytokine CC genes. Cytokines are a family of secreted proteins involved in immunoregulatory and inflammatory processes. The CC cytokines are proteins characterized by two adjacent cysteines. The cytokine encoded by this gene displays chemotactic activity on resting T lymphocytes, a minimal activity on neutrophils, and is negative on monocytes and activated T lymphocytes. The protein is also a strong suppressor of colony formation by a multipotential hematopoietic progenitor cell line. [provided by RefSeq, Jul 2008]
Function	Chemotactic for resting T-lymphocytes, and eosinophils. Has lower chemotactic activity for neutrophils but none for monocytes and activated lymphocytes. Is a strong suppressor of colony formation by a multipotential hematopoietic progenitor cell line. Binds to CCR3. [UniProt]
Highlight	Related products: CCL24 ELISA Kits ; New ELISA data calculation tool: Simplify the ELISA analysis by GainData
PTM	N-glycosylated. [UniProt]



ARG81406 Human CCL24 / Eotaxin 2 ELISA Kit standard curve image

ARG81406 Human CCL24 / Eotaxin 2 ELISA Kit results of a typical standard run with optical density reading at 450 nm.
