

ARG81401 Human Activin A ELISA Kit

Package: 96 wells
Store at: 4°C

Component

Cat. No.	Component Name	Package	Temp
ARG81401-001	Antibody-coated microplate	8 X 12 strips	4°C. Unused strips should be sealed tightly in the air-tight pouch.
ARG81401-002	Standard	2 X 10 ng/vial	4°C
ARG81401-003	Standard/Sample diluent	30 ml (Ready to use)	4°C
ARG81401-004	Antibody conjugate concentrate (100X)	1 vial (100 µl)	4°C
ARG81401-005	Antibody diluent buffer	12 ml (Ready to use)	4°C
ARG81401-006	HRP-Streptavidin concentrate (100X)	1 vial (100 µl)	4°C
ARG81401-007	HRP-Streptavidin diluent buffer	12 ml (Ready to use)	4°C
ARG81401-008	25X Wash buffer	20 ml	4°C
ARG81401-009	TMB substrate	10 ml (Ready to use)	4°C (Protect from light)
ARG81401-010	STOP solution	10 ml (Ready to use)	4°C
ARG81401-011	Plate sealer	4 strips	Room temperature

Summary

Product Description	ARG81401 Human Activin A ELISA Kit is an Enzyme Immunoassay kit for the quantification of Human Activin A in serum, plasma (heparin, EDTA), saliva and cell culture supernatants.
Tested Reactivity	Hu
Predict Reactivity	Bov, Mk, Rb
Tested Application	ELISA
Specificity	There is no detectable cross-reactivity with other relevant proteins.
Target Name	Activin A
Conjugation	HRP
Conjugation Note	Substrate: TMB and read at 450 nm.
Sensitivity	7.8 pg/ml
Sample Type	Serum, plasma (heparin, EDTA), saliva and cell culture supernatants.
Standard Range	15.6 - 1000 pg/ml

Sample Volume	100 µl
Precision	Intra-Assay CV: 6.4% Inter-Assay CV: 7.4%
Alternate Names	Erythroid differentiation protein; Activin beta-A chain; FRP; EDF; Inhibin beta A chain

Application Instructions

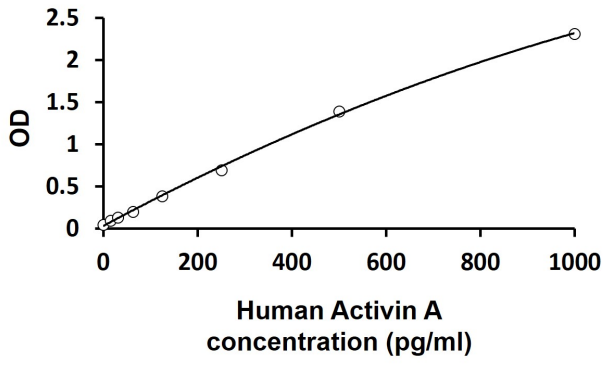
Assay Time	~ 5 hours
------------	-----------

Properties

Form	96 well
Storage instruction	Store the kit at 2-8°C. Keep microplate wells sealed in a dry bag with desiccants. Do not expose test reagents to heat, sun or strong light during storage and usage. Please refer to the product user manual for detail temperatures of the components.
Note	For laboratory research only, not for drug, diagnostic or other use.

Bioinformation

Gene Symbol	INHBA
Gene Full Name	inhibin, beta A
Background	The inhibin beta A subunit joins the alpha subunit to form a pituitary FSH secretion inhibitor. Inhibin has been shown to regulate gonadal stromal cell proliferation negatively and to have tumor-suppressor activity. In addition, serum levels of inhibin have been shown to reflect the size of granulosa-cell tumors and can therefore be used as a marker for primary as well as recurrent disease. Because expression in gonadal and various extragonadal tissues may vary severalfold in a tissue-specific fashion, it is proposed that inhibin may be both a growth/differentiation factor and a hormone. Furthermore, the beta A subunit forms a homodimer, activin A, and also joins with a beta B subunit to form a heterodimer, activin AB, both of which stimulate FSH secretion. Finally, it has been shown that the beta A subunit mRNA is identical to the erythroid differentiation factor subunit mRNA and that only one gene for this mRNA exists in the human genome. [provided by RefSeq, Jul 2008]
Function	Inhibins and activins inhibit and activate, respectively, the secretion of follitropin by the pituitary gland. Inhibins/activins are involved in regulating a number of diverse functions such as hypothalamic and pituitary hormone secretion, gonadal hormone secretion, germ cell development and maturation, erythroid differentiation, insulin secretion, nerve cell survival, embryonic axial development or bone growth, depending on their subunit composition. Inhibins appear to oppose the functions of activins. [UniProt]
Highlight	Related products: Activin A antibodies ; Activin A ELISA Kits ; Activin A recombinant proteins ; New ELISA data calculation tool: Simplify the ELISA analysis by GainData



ARG81401 Human Activin A ELISA Kit standard curve image

ARG81401 Human Activin A ELISA Kit results of a typical standard run with optical density reading at 450 nm.