

ARG81264 Human Klotho ELISA Kit

Package: 96 wells

Store at: 4°C

Summary

Product Description	ARG81264 Human Klotho ELISA Kit is an Enzyme Immunoassay kit for the quantification of Human Klotho in serum, plasma or cell culture supernatants.
Tested Reactivity	Hu
Tested Application	ELISA
Target Name	Klotho
Conjugation	HRP
Conjugation Note	Substrate: TMB and read at 450 nm.
Sensitivity	40 pg/ml
Sample Type	Serum, plasma or cell culture supernatants.
Standard Range	39 - 2500 pg/ml
Sample Volume	100 µl
Alternate Names	Klotho; EC 3.2.1.31

Application Instructions

Assay Time	~ 3.5 hours
------------	-------------

Properties

Form	96 well
Storage instruction	Store the kit at 2-8°C. Keep microplate wells sealed in a dry bag with desiccants. Do not expose test reagents to heat, sun or strong light during storage and usage. Please refer to the product user manual for detail temperatures of the components.
Note	For laboratory research only, not for drug, diagnostic or other use.

Bioinformation

Gene Symbol	KL
Gene Full Name	klotho
Background	This gene encodes a type-I membrane protein that is related to beta-glucosidases. Reduced production of this protein has been observed in patients with chronic renal failure (CRF), and this may be one of the factors underlying the degenerative processes (e.g., arteriosclerosis, osteoporosis, and skin atrophy) seen in CRF. Also, mutations within this protein have been associated with ageing and bone loss. [provided by RefSeq, Jul 2008]
Function	May have weak glycosidase activity towards glucuronylated steroids. However, it lacks essential active site Glu residues at positions 239 and 872, suggesting it may be inactive as a glycosidase in vivo. May be involved in the regulation of calcium and phosphorus homeostasis by inhibiting the synthesis of active vitamin D (By similarity). Essential factor for the specific interaction between FGF23 and FGFR1 (By

similarity).

The Klotho peptide generated by cleavage of the membrane-bound isoform may be an anti-aging circulating hormone which would extend life span by inhibiting insulin/IGF1 signaling. [UniProt]

Highlight

Related products:

[Klotho antibodies](#); [Klotho ELISA Kits](#);

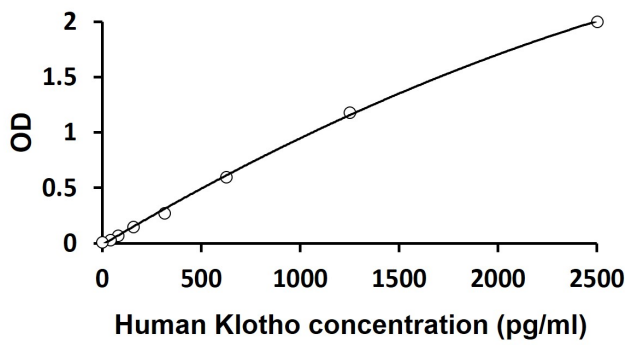
New ELISA data calculation tool:

[Simplify the ELISA analysis by GainData](#)

PTM

N-glycosylated.

Images



ARG81264 Human Klotho ELISA Kit standard curve image

ARG81264 Human Klotho ELISA Kit results of a typical standard run with optical density reading at 450 nm.