

ARG81231 N-epsilon-carboxymethyl lysine (CML) ELISA Kit

Package: 96 wells
Store at: 4°C, -20°C

Summary

| | |
|---------------------|--|
| Product Description | ARG81231 N-epsilon-carboxymethyl lysine (CML) ELISA Kit is an Enzyme Immunoassay kit for the quantification of N-epsilon-carboxymethyl lysine (CML) in purified protein, plasma, serum, cell lysate. |
| Tested Reactivity | Other |
| Tested Application | ELISA |
| Target Name | N-epsilon-carboxymethyl lysine (CML) |
| Conjugation | HRP |
| Conjugation Note | Read at 450 nm. |
| Sensitivity | 50 ng/ml |
| Sample Type | Purified protein, plasma, serum, cell lysate |
| Standard Range | 0.05 - 12.5 µg/ml |
| Sample Volume | 50 µl |

Application Instructions

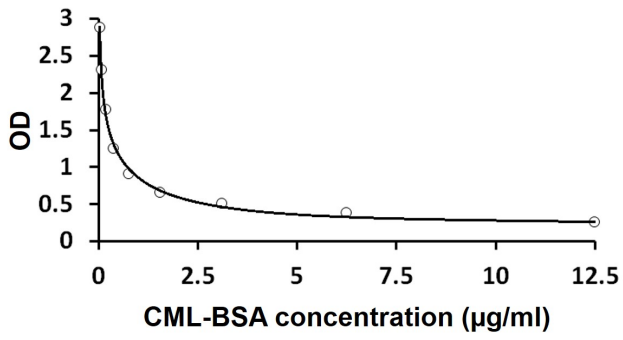
| | |
|------------|-----------|
| Assay Time | 2.5 hours |
|------------|-----------|

Properties

| | |
|---------------------|--|
| Form | 96 well |
| Storage instruction | Store components at 4°C or -20°C. Keep microplate wells sealed in a dry bag with desiccants. Do not expose test reagents to heat, sun or strong light during storage and usage. Please refer to the product user manual for detail temperatures of the components. |
| Note | For laboratory research only, not for drug, diagnostic or other use. |

Bioinformation

| | |
|-----------|--|
| Highlight | Related products: Lysine antibodies ; Lysine ELISA Kits ; Lysine Duos / Panels ; New ELISA data calculation tool: Simplify the ELISA analysis by GainData |
|-----------|--|



ARG81231 N-epsilon-carboxymethyl lysine (CML) ELISA Kit standard curve image

ARG81231 N-epsilon-carboxymethyl lysine (CML) ELISA Kit results of a typical standard run with optical density reading at 450 nm.