

ARG81225 Creatine Kinase-MB ELISA Kit

Package: 96 wells
Store at: 4°C, -20°C

Summary

Product Description	ARG81225 Creatine Kinase-MB ELISA Kit is an Enzyme Immunoassay kit for the quantification of Creatine Kinase-MB in serum, plasma or lysates.
Tested Reactivity	Hu
Tested Application	ELISA
Target Name	CKMB / Creatine Kinase MB
Conjugation Note	Read at 450 nm.
Sensitivity	350 pg/ml
Sample Type	Serum, plasma or lysates
Standard Range	0.156 - 10 ng/ml
Sample Volume	100 µl
Alternate Names	CKMM; M-CK; Creatine kinase M chain; EC 2.7.3.2; Creatine kinase M-type

Application Instructions

Assay Time	3.5 hours
------------	-----------

Properties

Form	96 well
Storage instruction	Store components at 4°C or -20°C. Keep microplate wells sealed in a dry bag with desiccants. Do not expose test reagents to heat, sun or strong light during storage and usage. Please refer to the product user manual for detail temperatures of the components.
Note	For laboratory research only, not for drug, diagnostic or other use.

Bioinformation

Gene Symbol	CKM
Gene Full Name	creatine kinase, muscle
Background	The protein encoded by this gene is a cytoplasmic enzyme involved in energy homeostasis and is an important serum marker for myocardial infarction. The encoded protein reversibly catalyzes the transfer of phosphate between ATP and various phosphogens such as creatine phosphate. It acts as a homodimer in striated muscle as well as in other tissues, and as a heterodimer with a similar brain isozyme in heart. The encoded protein is a member of the ATP:guanido phosphotransferase protein family. [provided by RefSeq, Jul 2008]
Function	Reversibly catalyzes the transfer of phosphate between ATP and various phosphogens (e.g. creatine phosphate). Creatine kinase isoenzymes play a central role in energy transduction in tissues with large, fluctuating energy demands, such as skeletal muscle, heart, brain and spermatozoa. [UniProt]

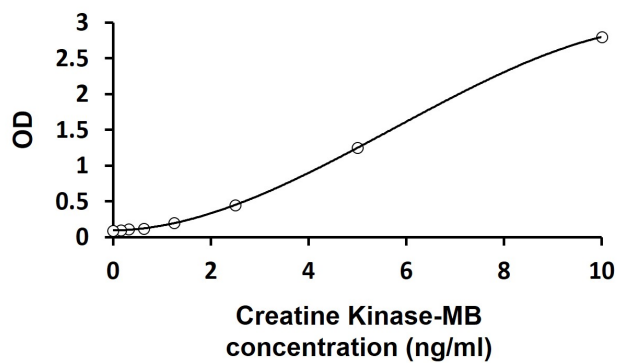
Highlight

Related products:

New ELISA data calculation tool:

[Simplify the ELISA analysis by GainData](#)

Images



ARG81225 Creatine Kinase-MB ELISA Kit standard curve image

ARG81225 Creatine Kinase-MB ELISA Kit results of a typical standard run with optical density reading at 450 nm.