

**ARG81200**  
**RFP ELISA Kit**Package: 96 wells  
Store at: 4°C, -80°C

### Summary

Product Description	ARG81200 RFP ELISA Kit is an Enzyme Immunoassay kit for the quantification of Red fluorescent protein (RFP) or RFP fusion protein in cell culture supernatants, cell lysate and tissue lysate.
Tested Reactivity	Other
Tested Application	ELISA
Specificity	This RFP ELISA kit recognizes TagRFP, TurboRFP, DsRed, mCherry, mKate, mRuby, mBanana, mOrange, mPlum, mStrawberry, and tdTomato.
Target Name	RFP
Conjugation Note	Read at 450 nm.
Sensitivity	150 pg/ml
Sample Type	Cell culture supernatants, cell lysate and tissue lysate
Standard Range	156 - 10000 pg/ml
Sample Volume	100 µl

### Application Instructions

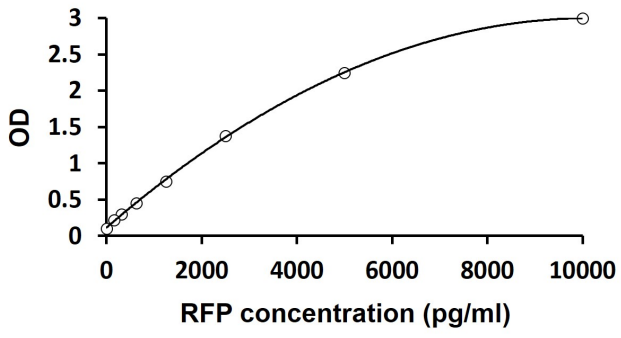
Assay Time	4.5 hours
------------	-----------

### Properties

Form	96 well
Storage instruction	Store components at 4°C or -80°C. Keep microplate wells sealed in a dry bag with desiccants. Do not expose test reagents to heat, sun or strong light during storage and usage. Please refer to the product user manual for detail temperatures of the components.
Note	For laboratory research only, not for drug, diagnostic or other use.

### Bioinformation

Highlight	Related products: <a href="#">RFP antibodies</a> ; <a href="#">RFP ELISA Kits</a> ; <a href="#">RFP Duos / Panels</a> ; New ELISA data calculation tool: <a href="#">Simplify the ELISA analysis by GainData</a>
-----------	---



ARG81200 RFP ELISA Kit standard curve image

ARG81200 RFP ELISA Kit results of a typical standard run with optical density reading at 450 nm.