

ARG81133 Sphingosine 1-Phosphate ELISA Kit

Package: 96 wells
Store at: 4°C, -20°C

Summary

Product Description	ARG81133 Sphingosine 1-Phosphate ELISA Kit is an Enzyme Immunoassay kit for the quantification of Sphingosine 1-Phosphate in serum, plasma, tissue homogenate and cell culture lysate.
Tested Reactivity	Hu, Ms, Rat, Bov, Goat, Hrs
Tested Application	ELISA
Target Name	Sphingosine 1-Phosphate
Conjugation	HRP
Conjugation Note	Substrate: TMB and read at 450 nm
Sample Type	Serum, plasma, tissue homogenate and cell culture lysate
Standard Range	0.03 - 4 µM
Sample Volume	Serum and Plasma Samples: 25 µl Cell Lysate or Tissue Homogenate: 30 µg/well

Application Instructions

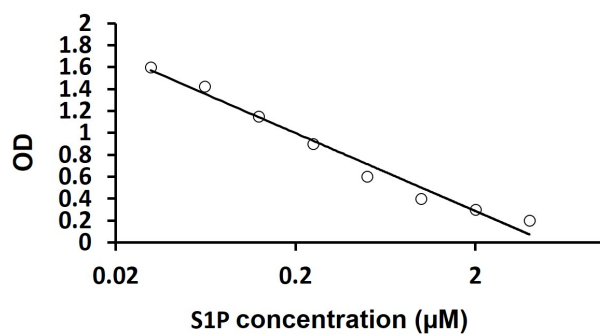
Assay Time	~ 5 hours
------------	-----------

Properties

Form	96 well
Storage instruction	Store components at 4°C or -20°C. Do not expose test reagents to heat, sun or strong light during storage and usage. Please refer to the product user manual for detail temperatures of the components.
Note	For laboratory research only, not for drug, diagnostic or other use.

Bioinformation

Background	Sphingosine 1-Phosphate (S1P) is key component of the sphingolipid signaling cascade. S1P initiates a proliferative, pro-angiogenic and anti-apoptotic sequence of events contributing to cancer progression. Recently, scientific literature has suggested that S1P is a potent tumorigenic growth factor that is likely released from tumor cells and that S1P may be a novel biomarker for early stage cancer detection. Sphingosine kinase has also been shown to be up-regulated in a variety of cancer types (S1P is produced via the activity of sphingosine kinase phosphorylating sphingosine).
Highlight	Related products: New ELISA data calculation tool: Simplify the ELISA analysis by GainData



ARG81133 Sphingosine 1-Phosphate ELISA Kit standard curve image

ARG81133 Sphingosine 1-Phosphate ELISA Kit results of a typical standard run with optical density reading at 450 nm.
