

ARG80935 Rat Prorenin / Renin ELISA Kit

Package: 96 wells
Store at: 4°C

Summary

Product Description	ARG80935 Rat Prorenin / Renin ELISA Kit is an Enzyme Immunoassay kit for the quantification of Rat Prorenin / Renin in plasma, serum or cell culture supernatants.
Tested Reactivity	Rat
Tested Application	ELISA
Target Name	Prorenin / Renin
Conjugation	HRP
Detection Range	0.1 - 100 ng/ml
Sample Type	plasma, serum or cell culture supernatants
Sample Volume	100 µl
Alternate Names	EC 3.4.23.15; Angiotensinogenase; HNFJ2; Renin

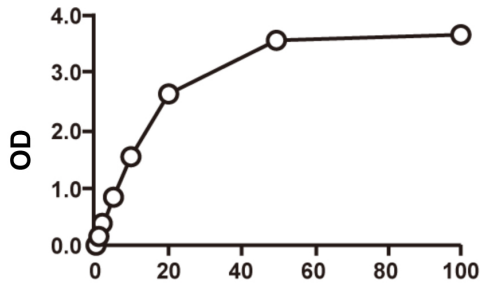
Properties

Form	96 well
Storage instruction	Store the kit at 2-8°C. Keep microplate wells sealed in a dry bag with desiccants. Do not expose test reagents to heat, sun or strong light during storage and usage. Please refer to the product user manual for detail temperatures of the components.
Note	For laboratory research only, not for drug, diagnostic or other use.

Bioinformation

Gene Symbol	Ren
Gene Full Name	renin
Background	Renin catalyzes the first step in the activation pathway of angiotensinogen--a cascade that can result in aldosterone release, vasoconstriction, and increase in blood pressure. Renin, an aspartyl protease, cleaves angiotensinogen to form angiotensin I, which is converted to angiotensin II by angiotensin I converting enzyme, an important regulator of blood pressure and electrolyte balance. Transcript variants that encode different protein isoforms and that arise from alternative splicing and the use of alternative promoters have been described, but their full-length nature has not been determined. Mutations in this gene have been shown to cause familial hyperproreninemia. [provided by RefSeq, Jul 2008]
Function	Renin is a highly specific endopeptidase, whose only known function is to generate angiotensin I from angiotensinogen in the plasma, initiating a cascade of reactions that produce an elevation of blood pressure and increased sodium retention by the kidney. [UniProt]
Highlight	Related products: Prorenin ELISA Kits: New ELISA data calculation tool: Simplify the ELISA analysis by GainData

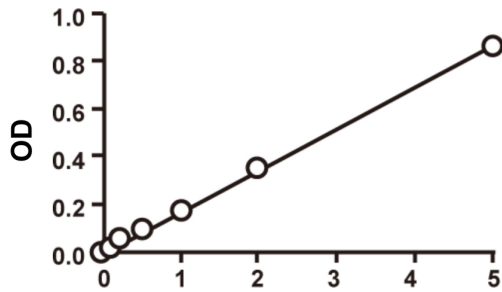
Images



ARG80935 Rat Prorenin / Renin ELISA Kit standard curve image

ARG80935 Rat Prorenin / Renin ELISA Kit results of a typical standard run with optical density reading at 450 nm.

Total Rat Prorenin/Renin Concentration (ng/ml)



ARG80935 Rat Prorenin / Renin ELISA Kit standard curve image

ARG80935 Rat Prorenin / Renin ELISA Kit results of a typical standard run with optical density reading at 450 nm.

Total Rat Prorenin/Renin Concentration (ng/ml)