

ARG67235 anti-Enolase 2 antibody [12F]

Package: 100 µl
Store at: -20°C

Summary

Product Description	Mouse Monoclonal antibody recognizes Enolase 2
Tested Reactivity	Hu, Ms, Rat
Tested Application	IHC-P, WB
Host	Mouse
Clonality	Monoclonal
Clone	12F
Isotype	IgG1
Target Name	Enolase 2
Conjugation	Un-conjugated
Alternate Names	ENO2; Enolase 2; NSE; Gamma-Enolase; 2-Phospho-D-Glycerate Hydro-Lyase; Enolase 2 (Gamma, Neuronal); Neuronal Enriched Enolase; Neuron-Specific Enolase; Neural Enolase; EC 4.2.1.11; Epididymis Secretory Protein Li 279; 2-Phospho-D-Glycerate Hydrolyase; Neuron Specific Gamma Enolase; Neurone-Specific Enolase; Neuron Specific Enolase; HEL-S-279

Application Instructions

Application table	Application	Dilution
	IHC-P	1:500 - 1:1000
	WB	1:1000 - 1:12000
Application Note	* The dilutions indicate recommended starting dilutions and the optimal dilutions or concentrations should be determined by the scientist.	

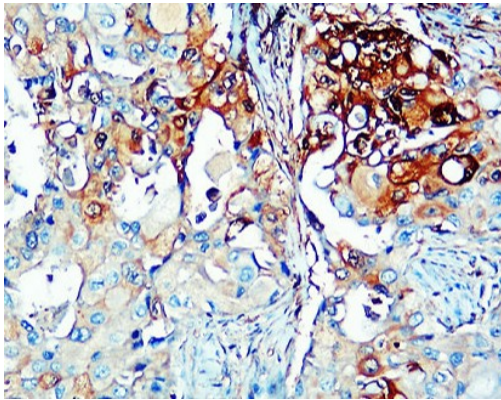
Properties

Form	Liquid
Purification	Affinity purified
Buffer	PBS (pH 7.0), 0.025% ProClin 300 and 20% Glycerol.
Preservative	0.025% ProClin 300
Stabilizer	20% Glycerol
Concentration	1.01 mg/ml
Storage instruction	For continuous use, store undiluted antibody at 2-8°C for up to a week. For long-term storage, aliquot and store at -20°C or below. Storage in frost free freezers is not recommended. Avoid repeated freeze/thaw cycles. Suggest spin the vial prior to opening. The antibody solution should be gently mixed before use.
Note	For laboratory research only, not for drug, diagnostic or other use.

Bioinformation

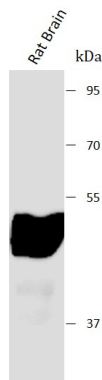
Gene Symbol	ENO2
Gene Full Name	Enolase 2
Background	This gene encodes one of the three enolase isoenzymes found in mammals. This isoenzyme, a homodimer, is found in mature neurons and cells of neuronal origin. A switch from alpha enolase to gamma enolase occurs in neural tissue during development in rats and primates. [provided by RefSeq, Jul 2008]
Function	Has neurotrophic and neuroprotective properties on a broad spectrum of central nervous system (CNS) neurons. Binds, in a calcium-dependent manner, to cultured neocortical neurons and promotes cell survival. [Uniprot]
Calculated Mw	47 kDa
PTM	Acetylation, Hydroxylation, Isopeptide bond, Phosphoprotein, Ubl conjugation. [Uniprot]
Cellular Localization	Cell membrane, Cytoplasm, Membrane. [Uniprot]

Images



ARG67235 anti-Enolase 2 antibody IHC-P image

Immunohistochemistry: Human breast cancer stained with ARG67235 anti-Enolase 2 antibody at 1:200 dilution.



ARG67235 anti-Enolase 2 antibody WB image

Western blot: Rat Brain stained with ARG67235 anti-Enolase 2 antibody at 1:1000 dilution.

ARG67235 anti-Enolase 2 antibody WB image

Western blot: Mouse Brain stained with ARG67235 anti-Enolase 2 antibody at 1:1000 dilution.

