

ARG67222 anti-EGFL7 antibody

Package: 100 µg
Store at: -20°C

Summary

Product Description	Rabbit Polyclonal antibody recognizes EGFL7
Tested Reactivity	Hu
Tested Application	ICC/IF, WB
Host	Rabbit
Clonality	Polyclonal
Target Name	EGFL7
Species	Human
Immunogen	Recombinant protein corresponding to Human EGFL7 (a.a. sequence P178-S273).
Conjugation	Un-conjugated
Alternate Names	EGFL7; EGF Like Domain Multiple 7; ZNEU1; Multiple Epidermal Growth Factor-Like Domains Protein 7; Epidermal Growth Factor-Like Protein 7; Multiple EGF-Like Domains Protein 7; Vascular Endothelial Statin; NOTCH4-Like Protein; EGF-Like Protein 7; EGF-Like-Domain, Multiple 7; VE-STATIN; VE-Statin; MEGF7; Zneu1; NEU1

Application Instructions

Application table	Application	Dilution
	ICC/IF	1µg/ml
	WB	2-5 µg/ml
Application Note	* The dilutions indicate recommended starting dilutions and the optimal dilutions or concentrations should be determined by the scientist.	

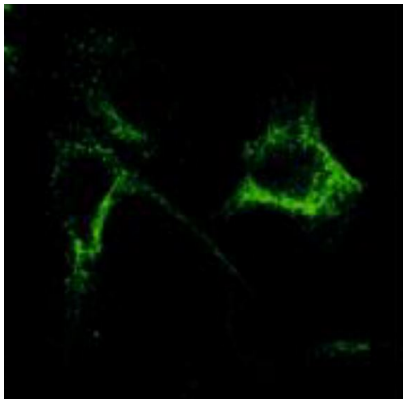
Properties

Form	Powder
Purification	Protein A purified
Buffer	PBS
Reconstitution	Water
Concentration	0.1 - 1.0 mg/ml
Storage instruction	For continuous use, store undiluted antibody at 2-8°C for up to a week. For long-term storage, aliquot and store at -20°C or below. Storage in frost free freezers is not recommended. Avoid repeated freeze/thaw cycles. Suggest spin the vial prior to opening. The antibody solution should be gently mixed before use.
Note	For laboratory research only, not for drug, diagnostic or other use.

Bioinformation

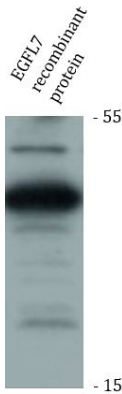
Gene Symbol	EGFL7
Gene Full Name	EGF Like Domain Multiple 7
Background	This gene encodes a secreted endothelial cell protein that contains two epidermal growth factor-like domains. The encoded protein may play a role in regulating vasculogenesis. This protein may be involved in the growth and proliferation of tumor cells. Alternate splicing results in multiple transcript variants. [provided by RefSeq, Feb 2012]
Function	Regulates vascular tubulogenesis in vivo. Inhibits platelet-derived growth factor (PDGF)-BB-induced smooth muscle cell migration and promotes endothelial cell adhesion to the extracellular matrix and angiogenesis.
Calculated Mw	30 kDa
PTM	Disulfide bond. [UniProt]
Cellular Localization	Secreted. [UniProt]

Images



ARG67222 anti-EGFL7 antibody ICC/IF image

Immunofluorescence: EGFL7 transfected HEK293T cells stained with ARG67222 anti-EGFL7 antibody at 1µg/ml dilution.



ARG67222 anti-EGFL7 antibody WB image

Western blot: EGFL7 recombinant protein stained with ARG67222 anti-EGFL7 antibody.