

ARG67218 anti-KDM5D / Jarid1D / SMCY antibody

Package: 100 µg
Store at: -20°C

Summary

Product Description	Rabbit Polyclonal antibody recognizes KDM5D / Jarid1D / SMCY
Tested Reactivity	Hu
Tested Application	WB
Host	Rabbit
Clonality	Polyclonal
Target Name	KDM5D / Jarid1D / SMCY
Species	Human
Immunogen	Recombinant protein corresponding to C-terminal region of human KDM5D / Jarid1D / SMCY.
Conjugation	Un-conjugated
Alternate Names	KDM5D; Lysine Demethylase 5D; KIAA0234; JARID1D; SMCY; HYA; HY; Jumonji, AT Rich Interactive Domain 1D (RBP2-Like); [Histone H3]-Trimethyl-L-Lysine(4) Demethylase 5D; Jumonji/ARID Domain-Containing Protein 1D; Lysine (K)-Specific Demethylase 5D; Lysine-Specific Demethylase 5D; Histocompatibility Y Antigen; Histone Demethylase JARID1D; Protein SmcY; H-Y; Epididymis Secretory Sperm Binding Protein; Selected Mouse CDNA On Y, Human Homolog Of; Jumonji, AT Rich Interactive Domain 1D; Smcy Homolog, Y-Linked (Mouse); SMC Homolog, Y Chromosome; Smcy Homolog, Y-Linked; EC 1.14.11.67; EC 1.14.11

Application Instructions

Application table	Application	Dilution
	WB	1-5 µg/ml
Application Note	* The dilutions indicate recommended starting dilutions and the optimal dilutions or concentrations should be determined by the scientist.	

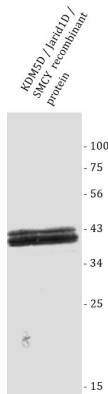
Properties

Form	Powder
Purification	Protein A purified
Buffer	PBS
Reconstitution	Water
Concentration	0.1 - 1.0 mg/ml
Storage instruction	For continuous use, store undiluted antibody at 2-8°C for up to a week. For long-term storage, aliquot and store at -20°C or below. Storage in frost free freezers is not recommended. Avoid repeated freeze/thaw cycles. Suggest spin the vial prior to opening. The antibody solution should be gently mixed before use.
Note	For laboratory research only, not for drug, diagnostic or other use.

Bioinformation

Gene Symbol	KDM5D
Gene Full Name	Lysine Demethylase 5D
Background	This gene encodes a protein containing zinc finger domains. A short peptide derived from this protein is a minor histocompatibility antigen which can lead to graft rejection of male donor cells in a female recipient. Alternative splicing results in multiple transcript variants. [provided by RefSeq, Apr 2009]
Function	Histone demethylase that specifically demethylates 'Lys-4' of histone H3, thereby playing a central role in histone code. Does not demethylate histone H3 'Lys-9', H3 'Lys-27', H3 'Lys-36', H3 'Lys-79' or H4 'Lys-20'. Demethylates trimethylated and dimethylated but not monomethylated H3 'Lys-4'. May play a role in spermatogenesis. Involved in transcriptional repression of diverse metastasis-associated genes; in this function seems to cooperate with ZMYND8. Suppresses prostate cancer cell invasion. Regulates androgen receptor (AR) transcriptional activity by demethylating H3K4me3 active transcription marks.
PTM	Isopeptide bond; Phosphoprotein; Ubl conjugation. [UniProt]
Cellular Localization	Nucleus. [UniProt]

Images



ARG67218 anti-KDM5D / Jarid1D / SMCY antibody WB image

Western blot: KDM5D / Jarid1D / SMCY recombinant protein stained with ARG67218 anti-KDM5D / Jarid1D / SMCY antibody.