

ARG67211 anti-Endocan antibody

Package: 100 µg
Store at: -20°C

Summary

Product Description	Rabbit Polyclonal antibody recognizes Endocan
Tested Reactivity	Ms
Tested Application	WB
Host	Rabbit
Clonality	Polyclonal
Target Name	Endocan
Species	Mouse
Immunogen	Recombinant protein corresponding to Mouse Endocan (a.a. sequence W19-R184).
Conjugation	Un-conjugated
Alternate Names	ESM1; Endothelial Cell Specific Molecule 1; Endothelial Cell-Specific Molecule 1; ESM-1; Endocan

Application Instructions

Application table	Application	Dilution
	WB	1-5 µg/ml

Application Note * The dilutions indicate recommended starting dilutions and the optimal dilutions or concentrations should be determined by the scientist.

Properties

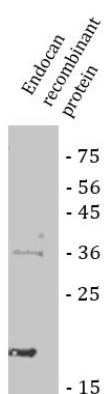
Form	Powder
Purification	Protein A purified
Buffer	PBS
Reconstitution	Water
Concentration	0.1 - 1.0 mg/ml
Storage instruction	For continuous use, store undiluted antibody at 2-8°C for up to a week. For long-term storage, aliquot and store at -20°C or below. Storage in frost free freezers is not recommended. Avoid repeated freeze/thaw cycles. Suggest spin the vial prior to opening. The antibody solution should be gently mixed before use.
Note	For laboratory research only, not for drug, diagnostic or other use.

Bioinformation

Gene Symbol	ESM1
Gene Full Name	Endothelial Cell Specific Molecule 1

Background	This gene encodes a secreted protein which is mainly expressed in the endothelial cells in human lung and kidney tissues. The expression of this gene is regulated by cytokines, suggesting that it may play a role in endothelium-dependent pathological disorders. The transcript contains multiple polyadenylation and mRNA instability signals. Two transcript variants encoding different isoforms have been found for this gene. [provided by RefSeq, Oct 2008]
Function	Involved in angiogenesis; promotes angiogenic sprouting. May have potent implications in lung endothelial cell-leukocyte interactions. [UniProt]
Calculated Mw	20 kDa
PTM	Disulfide bond; Glycoprotein; Proteoglycan. [UniProt]
Cellular Localization	Secreted. [UniProt]

Images



ARG67211 anti-Endocan antibody WB image

Western blot: Endocan recombinant protein stained with RG67211 anti-Endocan antibody.