

ARG67182 anti-Rubisco Large Chain antibody

Package: 100 µl
Store at: -20°C

Summary

Product Description	Rabbit Polyclonal antibody recognizes Rubisco Large Chain
Tested Reactivity	Arabi
Tested Application	WB
Host	Rabbit
Clonality	Polyclonal
Isotype	IgG
Target Name	Rubisco Large Chain
Species	Plant
Immunogen	Synthetic peptide corresponding to N-terminus of arabidopsis thaliana Rubisco Large Chain protein.
Conjugation	Un-conjugated
Alternate Names	Ribulose biphosphate carboxylase large chain; RuBisCO large subunit

Application Instructions

Application table	Application	Dilution
	WB	1:500 - 1:2000
Application Note	* The dilutions indicate recommended starting dilutions and the optimal dilutions or concentrations should be determined by the scientist.	
Observed Size	53 kDa	

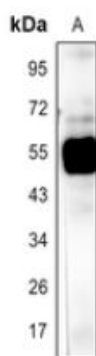
Properties

Form	Liquid
Purification	Affinity purification with immunogen.
Buffer	0.42% Potassium phosphate (pH 7.3), 0.87% NaCl, 0.01% Sodium azide and 30% Glycerol.
Preservative	0.01% Sodium azide
Stabilizer	30% Glycerol
Storage instruction	For continuous use, store undiluted antibody at 2-8°C for up to a week. For long-term storage, aliquot and store at -20°C or below. Storage in frost free freezers is not recommended. Avoid repeated freeze/thaw cycles. Suggest spin the vial prior to opening. The antibody solution should be gently mixed before use.
Note	For laboratory research only, not for drug, diagnostic or other use.

Bioinformation

Gene Symbol	rbcl
Gene Full Name	ribulose-1,5-bisphosphate carboxylase/oxygenase large subunit
Function	RuBisCO catalyzes two reactions: the carboxylation of D-ribulose 1,5-bisphosphate, the primary event in carbon dioxide fixation, as well as the oxidative fragmentation of the pentose substrate in the photorespiration process. [UniProt] Both reactions occur simultaneously and in competition at the same active site (Probable). [UniProt] Binds to abscisic acid (ABA). [UniProt]
Calculated Mw	52 kDa
Cellular Localization	Plastid, chloroplast. [UniProt]

Images



ARG67182 anti-Rubisco Large Chain antibody WB image

Western blot: *Arabidopsis thaliana* stained with ARG67182 anti-Rubisco Large Chain antibody.