

ARG67180 anti-TIC40 antibody

Package: 100 µl
Store at: -20°C

Summary

Product Description	Rabbit Polyclonal antibody recognizes TIC40
Tested Reactivity	Arabi
Tested Application	WB
Host	Rabbit
Clonality	Polyclonal
Isotype	IgG
Target Name	TIC40
Species	Plant
Immunogen	Synthetic peptide corresponding to C-terminus of arabidopsis thaliana TIC40 protein.
Conjugation	Un-conjugated
Alternate Names	PDE120; Protein TIC 40 chloroplastic; Protein PIGMENT DEFECTIVE EMBRYO 120; Translocon at the inner envelope membrane of chloroplasts 40; AtTIC40

Application Instructions

Application table	Application	Dilution
	WB	1:500 - 1:2000
Application Note	* The dilutions indicate recommended starting dilutions and the optimal dilutions or concentrations should be determined by the scientist.	
Observed Size	49 kDa	

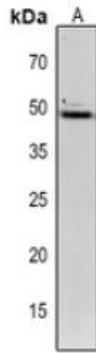
Properties

Form	Liquid
Purification	Affinity purification with immunogen.
Buffer	0.42% Potassium phosphate (pH 7.3), 0.87% NaCl, 0.01% Sodium azide and 30% Glycerol.
Preservative	0.01% Sodium azide
Stabilizer	30% Glycerol
Storage instruction	For continuous use, store undiluted antibody at 2-8°C for up to a week. For long-term storage, aliquot and store at -20°C or below. Storage in frost free freezers is not recommended. Avoid repeated freeze/thaw cycles. Suggest spin the vial prior to opening. The antibody solution should be gently mixed before use.
Note	For laboratory research only, not for drug, diagnostic or other use.

Bioinformation

Gene Symbol	TIC40
Gene Full Name	hydroxyproline-rich glycoprotein family protein
Background	chloroplast protein import (Tic40)
Function	Involved in protein precursor import into chloroplasts. [UniProt] Part of the motor complex consisting of a co-chaperone (TIC40) and a chaperone (HSP93) associated with the import channel (TIC110). [UniProt] Causes the release of bound transit peptides from TIC110 and stimulates ATP hydrolysis by HSP93. [UniProt] Involved in reinsertion of proteins from the chloroplast stroma into the inner membrane
Calculated Mw	48 kDa
Cellular Localization	Plastid, chloroplast thylakoid membrane. [UniProt]

Images



ARG67180 anti-TIC40 antibody WB image

Western blot: *Arabidopsis thaliana* stained with ARG67180 anti-TIC40 antibody.