

**ARG67179**  
anti-SCE1 antibodyPackage: 100 µl  
Store at: -20°C

### Summary

Product Description	Rabbit Polyclonal antibody recognizes SCE1
Tested Reactivity	Arabi
Tested Application	WB
Host	Rabbit
Clonality	Polyclonal
Isotype	IgG
Target Name	SCE1
Species	Plant
Immunogen	Synthetic peptide corresponding to N-terminus of arabidopsis thaliana SCE1 protein.
Conjugation	Un-conjugated
Alternate Names	AHUS5; EMB1637; SUMO-conjugating enzyme SCE1; Protein EMBRYO DEFECTIVE 1637; Protein hus5 homolog; SUMO-conjugating enzyme 1; AtSCE1

### Application Instructions

Application table	Application	Dilution
	WB	1:500 - 1:2000
Application Note	* The dilutions indicate recommended starting dilutions and the optimal dilutions or concentrations should be determined by the scientist.	
Observed Size	18 kDa	

### Properties

Form	Liquid
Purification	Affinity purification with immunogen.
Buffer	0.42% Potassium phosphate (pH 7.3), 0.87% NaCl, 0.01% Sodium azide and 30% Glycerol.
Preservative	0.01% Sodium azide
Stabilizer	30% Glycerol
Storage instruction	For continuous use, store undiluted antibody at 2-8°C for up to a week. For long-term storage, aliquot and store at -20°C or below. Storage in frost free freezers is not recommended. Avoid repeated freeze/thaw cycles. Suggest spin the vial prior to opening. The antibody solution should be gently mixed before use.
Note	For laboratory research only, not for drug, diagnostic or other use.

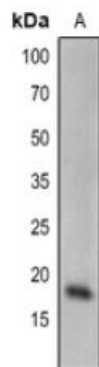
## Bioinformation

---

Gene Symbol	SCE1
Gene Full Name	sumo conjugation enzyme 1
Background	Encodes a SUMO ligase that directs the attachment of the small protein SUMO to target proteins via an isopeptide bond. This enzyme is localized to the nucleus and plants with reduced levels of this protein show higher sensitivity to ABA in root growth inhibition assays. It has high similarity to the yeast UBC9 SUMO ligase and is sometimes referred to by that name.
Function	SUMO-conjugating enzyme that accepts the SUMO proteins from the E1 SUMO-activating heterodimer SAE1/SAE2 and catalyzes its covalent attachment to other proteins with the E3 SUMO ligases SIZ1 and MMS21. [UniProt] Associates with SIZ1 for sumoylation of the transcription factor GTE3. [UniProt]
Calculated Mw	17 kDa
Cellular Localization	Cytosol, nucleus. [UniProt]

## Images

---



ARG67179 anti-SCE1 antibody WB image

Western blot: *Arabidopsis thaliana* stained with ARG67179 anti-SCE1 antibody.