

**ARG67174**  
anti-petC antibodyPackage: 100 µl  
Store at: -20°C

### Summary

Product Description	Rabbit Polyclonal antibody recognizes petC
Tested Reactivity	Arabi
Tested Application	WB
Host	Rabbit
Clonality	Polyclonal
Isotype	IgG
Target Name	petC
Species	Plant
Immunogen	Synthetic peptide corresponding to N-terminus of arabidopsis thaliana petC protein.
Conjugation	Un-conjugated
Alternate Names	PGR1; Cytochrome b6-f complex iron-sulfur subunit chloroplastic; Plastohydroquinone:plastocyanin oxidoreductase iron-sulfur protein; Proton gradient regulation protein 1; Rieske iron-sulfur protein; ISP; RISP

### Application Instructions

Application table	Application	Dilution
	WB	1:500 - 1:2000
Application Note	* The dilutions indicate recommended starting dilutions and the optimal dilutions or concentrations should be determined by the scientist.	
Observed Size	22 kDa	

### Properties

Form	Liquid
Purification	Affinity purification with immunogen.
Buffer	0.42% Potassium phosphate (pH 7.3), 0.87% NaCl, 0.01% Sodium azide and 30% Glycerol.
Preservative	0.01% Sodium azide
Stabilizer	30% Glycerol
Storage instruction	For continuous use, store undiluted antibody at 2-8°C for up to a week. For long-term storage, aliquot and store at -20°C or below. Storage in frost free freezers is not recommended. Avoid repeated freeze/thaw cycles. Suggest spin the vial prior to opening. The antibody solution should be gently mixed before use.
Note	For laboratory research only, not for drug, diagnostic or other use.

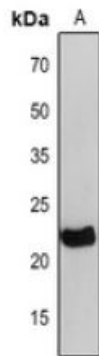
## Bioinformation

---

Gene Symbol	petC
Gene Full Name	photosynthetic electron transfer C
Background	Encodes the Rieske FeS center of cytochrome b6f complex. Gene is expressed in shoot but not in root. Mutant has reduced electron transport at saturating light intensities and Q-cycle activity is hypersensitive to acidification of the thylakoid lumen.
Function	Essential protein for photoautotrophism. [UniProt] Confers resistance to photo-oxidative damages by contributing to the thermal dissipation of light energy and to luminal acidification (increase of pH gradient). [UniProt] Component of the cytochrome b6-f complex, which mediates electron transfer between photosystem II (PSII) and photosystem I (PSI), cyclic electron flow around PSI, and state transitions (By similarity). [UniProt]
Calculated Mw	24;22 kDa
Cellular Localization	Plastid, chloroplast thylakoid membrane, Mitochondrion inner membrane. [UniProt]

## Images

---



ARG67174 anti-petC antibody WB image

Western blot: *Arabidopsis thaliana* stained with ARG67174 anti-petC antibody.