

ARG67173 anti-PAP1 antibody

Package: 100 µl
Store at: -20°C

Summary

Product Description	Rabbit Polyclonal antibody recognizes PAP1
Tested Reactivity	Arabi
Tested Application	WB
Host	Rabbit
Clonality	Polyclonal
Isotype	IgG
Target Name	PAP1
Species	Plant
Immunogen	Synthetic peptide corresponding to N-terminus of arabidopsis thaliana PAPI protein.
Conjugation	Un-conjugated
Alternate Names	FBN1a; FIB1a; PGL35; Probable plastid-lipid-associated protein 1 chloroplastic; AtPap1; Fibrillin-1a; Plastoglobulin 35; AtPGL35

Application Instructions

Application table	Application	Dilution
	WB	1:500 - 1:2000
Application Note	* The dilutions indicate recommended starting dilutions and the optimal dilutions or concentrations should be determined by the scientist.	
Observed Size	35 kDa	

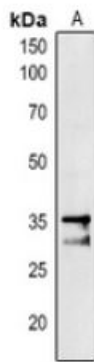
Properties

Form	Liquid
Purification	Affinity purification with immunogen.
Buffer	0.42% Potassium phosphate (pH 7.3), 0.87% NaCl, 0.01% Sodium azide and 30% Glycerol.
Preservative	0.01% Sodium azide
Stabilizer	30% Glycerol
Storage instruction	For continuous use, store undiluted antibody at 2-8°C for up to a week. For long-term storage, aliquot and store at -20°C or below. Storage in frost free freezers is not recommended. Avoid repeated freeze/thaw cycles. Suggest spin the vial prior to opening. The antibody solution should be gently mixed before use.
Note	For laboratory research only, not for drug, diagnostic or other use.

Bioinformation

Gene Symbol	PAP1
Gene Full Name	Probable plastid-lipid-associated protein 1, chloroplastic
Background	Fibrillin precursor protein. The fibrillin preprotein, but not the mature protein interacts with ABI2. Regulated by abscisic acid response regulators. Involved in abscisic acid-mediated photoprotection.
Function	Probably involved in light/cold stress-related jasmonate (JA) biosynthesis. [UniProt] Contributes to the protection of photosystem II (PSII) against light stress. [UniProt]
Calculated Mw	34 kDa
Cellular Localization	Plastid, chloroplast, plastoglobule, chloroplast thylakoid. [UniProt]

Images



ARG67173 anti-PAP1 antibody WB image

Western blot: *Arabidopsis thaliana* stained with ARG67173 anti-PAP1 antibody.