

ARG67172 anti-MPK6 antibody

Package: 100 µl
Store at: -20°C

Summary

Product Description	Rabbit Polyclonal antibody recognizes MPK6
Tested Reactivity	Arabi
Tested Application	WB
Host	Rabbit
Clonality	Polyclonal
Isotype	IgG
Target Name	MPK6
Species	Plant
Immunogen	Synthetic peptide corresponding to N-terminus of arabidopsis thaliana MPK6 protein.
Conjugation	Un-conjugated
Alternate Names	Mitogen-activated protein kinase 6; PROSITE-ProRule annotation; AtMPK6; MAP kinase 6

Application Instructions

Application table	Application	Dilution
	WB	1:500 - 1:2000
Application Note	* The dilutions indicate recommended starting dilutions and the optimal dilutions or concentrations should be determined by the scientist.	
Observed Size	45 kDa	

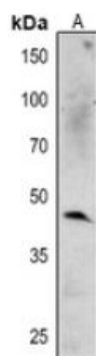
Properties

Form	Liquid
Purification	Affinity purification with immunogen.
Buffer	0.42% Potassium phosphate (pH 7.3), 0.87% NaCl, 0.01% Sodium azide and 30% Glycerol.
Preservative	0.01% Sodium azide
Stabilizer	30% Glycerol
Storage instruction	For continuous use, store undiluted antibody at 2-8°C for up to a week. For long-term storage, aliquot and store at -20°C or below. Storage in frost free freezers is not recommended. Avoid repeated freeze/thaw cycles. Suggest spin the vial prior to opening. The antibody solution should be gently mixed before use.
Note	For laboratory research only, not for drug, diagnostic or other use.

Bioinformation

Gene Symbol	MPK6
Gene Full Name	MAP kinase 6
Background	Encodes a MAP kinase induced by pathogens, ethylene biosynthesis, oxidative stress and osmotic stress. Also involved in ovule development. Homozygous mutants in a MPK3 heterozygous background are female sterile due to defects in integument development. MPK6 appears to be associated with the microsomal compartment and may be involved in mediating secretory processes.
Function	Mitogen-activated protein kinase (MAPK) which regulates abscisic acid (ABA) responses in a MAPKKK20-MKK5-MPK6 cascade involved in root growth (e. [UniProt]g. [UniProt] root cell division and elongation) and stomatal response. [UniProt]
Calculated Mw	45 kDa
Cellular Localization	Cytoplasm, Nucleus, Cytoplasm, cell cortex. [UniProt]

Images



ARG67172 anti-MPK6 antibody WB image

Western blot: *Arabidopsis thaliana* stained with ARG67172 anti-MPK6 antibody.