

ARG67169 anti-GRF-pan antibody

Package: 100 µl
Store at: -20°C

Summary

Product Description	Rabbit Polyclonal antibody recognizes GRF
Tested Reactivity	Arabi
Tested Application	WB
Host	Rabbit
Clonality	Polyclonal
Isotype	IgG
Target Name	GRF
Species	Plant
Immunogen	Synthetic peptide corresponding to N-terminus of arabidopsis thaliana GRF protein.
Conjugation	Un-conjugated
Alternate Names	GRF1; At4g09000; F23J3.30; 14-3-3-like protein GF14 chi; General regulatory factor 1; GRF2; GF14; At1g78300; F3F9.16; 14-3-3-like protein GF14 omega; General regulatory factor 2; GRF3; RCI1A; At5g38480; MXI10.21; 14-3-3-like protein GF14 psi; General regulatory factor 3; Protein RARE COLD INDUCIBLE 1A; GRF4; At1g35160; T32G9.30; 14-3-3-like protein GF14 phi; General regulatory factor 4; GRF5; At5g16050; F1N13_190; 14-3-3-like protein GF14 epsilon; General regulatory factor 5; GRF6; AFT1; RCI2; At5g10450; F12B17_200; 14-3-3-like protein GF14 lambda; 14-3-3-like protein AFT1; 14-3-3-like protein RCI2; General regulatory factor 6; GRF7; At3g02520; F16B3.15; 14-3-3-like protein GF14 nu; General regulatory factor 7; GRF8; At5g65430; MNA5.16; 14-3-3-like protein GF14 kappa; General regulatory factor 8; GRF9; At2g42590; F14N22.14; 14-3-3-like protein GF14 mu; General regulatory factor 9

Application Instructions

Application table	<table><thead><tr><th>Application</th><th>Dilution</th></tr></thead><tbody><tr><td>WB</td><td>1:500 - 1:2000</td></tr></tbody></table>	Application	Dilution	WB	1:500 - 1:2000
Application	Dilution				
WB	1:500 - 1:2000				
Application Note	* The dilutions indicate recommended starting dilutions and the optimal dilutions or concentrations should be determined by the scientist.				
Observed Size	30 kDa				

Properties

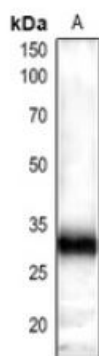
Form	Liquid
Purification	Affinity purification with immunogen.
Buffer	0.42% Potassium phosphate (pH 7.3), 0.87% NaCl, 0.01% Sodium azide and 30% Glycerol.
Preservative	0.01% Sodium azide
Stabilizer	30% Glycerol

Storage instruction	For continuous use, store undiluted antibody at 2-8°C for up to a week. For long-term storage, aliquot and store at -20°C or below. Storage in frost free freezers is not recommended. Avoid repeated freeze/thaw cycles. Suggest spin the vial prior to opening. The antibody solution should be gently mixed before use.
Note	For laboratory research only, not for drug, diagnostic or other use.

Bioinformation

Gene Symbol	GRF1; GRF2; GRF3; GRF4; GRF5; GRF6; GRF7; GRF8; GRF9
Gene Full Name	general regulatory factor
Background	Encodes a 14-3-3 gene, designated GRF1 chi (for general regulatory factor1-G-box factor 14-3-3 homolog isoform chi). The major native forms of 14-3-3s are homo- and hetero-dimers, the biological functions of which are to interact physically with specific client proteins and thereby effect a change in the client. As a result, 14-3-3s are involved in a vast array of processes such as the response to stress, cell-cycle control, and apoptosis, serving as adapters, activators, and repressors. There are currently 133 full-length sequences available.
Function	Is associated with a DNA binding complex that binds to the G box, a well-characterized cis-acting DNA regulatory element found in plant genes. [UniProt]
Calculated Mw	29 kDa
Cellular Localization	Cytoplasm, Nucleus. [UniProt]

Images



ARG67169 anti-GRF-pan antibody WB image

Western blot: *Arabidopsis thaliana* stained with ARG67169 anti-GRF-pan antibody.