

ARG67168 anti-GDH1 + GDH2 + GDH3 antibody

Package: 100 µl
Store at: -20°C

Summary

Product Description	Rabbit Polyclonal antibody recognizes GDH1,GDH2 and GDH3
Tested Reactivity	Arabi
Tested Application	WB
Host	Rabbit
Clonality	Polyclonal
Isotype	IgG
Target Name	GDH1 + GDH2 + GDH3
Species	Plant
Immunogen	Synthetic peptide corresponding to center region of arabidopsis thaliana GDH1/2/3 protein.
Conjugation	Un-conjugated
Alternate Names	GCDH; GDCH; GDCSH; Glycine cleavage system H protein 1 mitochondrial; Glycine cleavage system H protein 2 mitochondrial; Glycine cleavage system H protein 3 mitochondrial

Application Instructions

Application table	Application	Dilution
	WB	1:500 - 1:2000
Application Note	* The dilutions indicate recommended starting dilutions and the optimal dilutions or concentrations should be determined by the scientist.	
Observed Size	18 kDa	

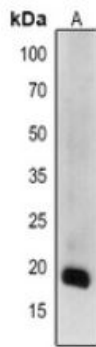
Properties

Form	Liquid
Purification	Affinity purification with immunogen.
Buffer	0.42% Potassium phosphate (pH 7.3), 0.87% NaCl, 0.01% Sodium azide and 30% Glycerol.
Preservative	0.01% Sodium azide
Stabilizer	30% Glycerol
Storage instruction	For continuous use, store undiluted antibody at 2-8°C for up to a week. For long-term storage, aliquot and store at -20°C or below. Storage in frost free freezers is not recommended. Avoid repeated freeze/thaw cycles. Suggest spin the vial prior to opening. The antibody solution should be gently mixed before use.
Note	For laboratory research only, not for drug, diagnostic or other use.

Bioinformation

Gene Symbol	GDH1; GDH2; GDH3
Gene Full Name	glycine decarboxylase complex H
Background	Encodes glycine decarboxylase complex H protein. Involved in photorespiration.
Function	The glycine decarboxylase (GDC) or glycine cleavage system catalyzes the degradation of glycine. [UniProt] The H protein shuttles the methylamine group of glycine from the P protein to the T protein. [UniProt]
Calculated Mw	17 kDa
Cellular Localization	Mitochondrion. [UniProt]

Images



ARG67168 anti-GDH1 + GDH2 + GDH3 antibody WB image

Western blot: *Arabidopsis thaliana* stained with ARG67168 anti-GDH1 + GDH2 + GDH3 antibody.