

## ARG67167 anti-DEGP5 antibody

Package: 100 µl  
Store at: -20°C

### Summary

Product Description	Rabbit Polyclonal antibody recognizes DEGP5
Tested Reactivity	Arabi
Tested Application	WB
Host	Rabbit
Clonality	Polyclonal
Isotype	IgG
Target Name	DEGP5
Species	Plant
Immunogen	Synthetic peptide corresponding to center region of arabidopsis thaliana DEGP5 protein.
Conjugation	Un-conjugated
Alternate Names	HHOA; Protease Do-like 5 chloroplastic

### Application Instructions

Application table	Application	Dilution
	WB	1:500 - 1:2000
Application Note	* The dilutions indicate recommended starting dilutions and the optimal dilutions or concentrations should be determined by the scientist.	
Observed Size	35 kDa	

### Properties

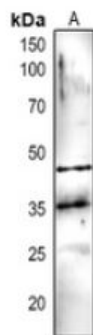
Form	Liquid
Purification	Affinity purification with immunogen.
Buffer	0.42% Potassium phosphate (pH 7.3), 0.87% NaCl, 0.01% Sodium azide and 30% Glycerol.
Preservative	0.01% Sodium azide
Stabilizer	30% Glycerol
Storage instruction	For continuous use, store undiluted antibody at 2-8°C for up to a week. For long-term storage, aliquot and store at -20°C or below. Storage in frost free freezers is not recommended. Avoid repeated freeze/thaw cycles. Suggest spin the vial prior to opening. The antibody solution should be gently mixed before use.
Note	For laboratory research only, not for drug, diagnostic or other use.

### Bioinformation

Gene Symbol	DEGP5
Gene Full Name	DEGP protease 5
Background	Encodes DEG5. Forms a hexamer with DEG8 in the thylakoid lumen. Involved in the cleavage of photodamaged D2 protein of photosystem II (PSII).
Function	Probable serine protease. [UniProt]
Calculated Mw	34 kDa
Cellular Localization	Plastid, chloroplast thylakoid membrane. [UniProt]

## Images

---



ARG67167 anti-DEGP5 antibody WB image

Western blot: *Arabidopsis thaliana* stained with ARG67167 anti-DEGP5 antibody.