

## ARG67165 anti-DEGP1 antibody

Package: 100 µl  
Store at: -20°C

### Summary

Product Description	Rabbit Polyclonal antibody recognizes DEGP1
Tested Reactivity	Arabi
Tested Application	WB
Host	Rabbit
Clonality	Polyclonal
Isotype	IgG
Target Name	DEGP1
Species	Plant
Immunogen	Synthetic peptide corresponding to C-terminus of arabidopsis thaliana DEGP1 protein.
Conjugation	Un-conjugated
Alternate Names	DEG1; DEGP; Protease Do-like 1 chloroplastic; Protein DEGRADATION OF PERIPLASMIC PROTEINS 1; DEGP PROTEASE 1

### Application Instructions

Application table	Application	Dilution
	WB	1:500 - 1:2000
Application Note	* The dilutions indicate recommended starting dilutions and the optimal dilutions or concentrations should be determined by the scientist.	
Observed Size	44 kDa	

### Properties

Form	Liquid
Purification	Affinity purification with immunogen.
Buffer	0.42% Potassium phosphate (pH 7.3), 0.87% NaCl, 0.01% Sodium azide and 30% Glycerol.
Preservative	0.01% Sodium azide
Stabilizer	30% Glycerol
Storage instruction	For continuous use, store undiluted antibody at 2-8°C for up to a week. For long-term storage, aliquot and store at -20°C or below. Storage in frost free freezers is not recommended. Avoid repeated freeze/thaw cycles. Suggest spin the vial prior to opening. The antibody solution should be gently mixed before use.
Note	For laboratory research only, not for drug, diagnostic or other use.

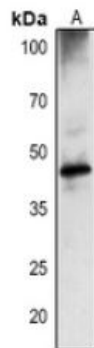
## Bioinformation

---

Gene Symbol	DEGP1
Gene Full Name	DegP protease 1
Background	Encodes a DegP protease; nuclear gene encoding chloroplast-targeted protease that can degrade two luminal proteins, plastocyanin and OE33, suggesting a role as a general-purpose protease in the thylakoid lumen. Involved in the degradation of D1 protein of PS II, hence participating in the repair of PS II damages caused by photoinhibition.
Function	Serine protease that is required at high temperature. [UniProt] May be involved in the degradation of damaged proteins. [UniProt] In vivo, can degrade beta-casein. [UniProt]
Calculated Mw	46 kDa
Cellular Localization	Plastid, chloroplast thylakoid membrane. [UniProt]

## Images

---



ARG67165 anti-DEGP1 antibody WB image

Western blot: *Arabidopsis thaliana* stained with ARG67165 anti-DEGP1 antibody.