

**ARG67164**  
anti-CYP38 antibodyPackage: 100 µl  
Store at: -20°C

### Summary

Product Description	Rabbit Polyclonal antibody recognizes CYP38
Tested Reactivity	Arabi
Tested Application	WB
Host	Rabbit
Clonality	Polyclonal
Isotype	IgG
Target Name	CYP38
Species	Plant
Immunogen	Synthetic peptide corresponding to C-terminus of arabidopsis thaliana CYP38 protein.
Conjugation	Un-conjugated
Alternate Names	Peptidyl-prolyl cis-trans isomerase CYP38 chloroplastic; PPlase CYP38; Rotamase CYP38; Thylakoid lumen PPlase

### Application Instructions

Application table	Application	Dilution
	WB	1:500 - 1:2000
Application Note	* The dilutions indicate recommended starting dilutions and the optimal dilutions or concentrations should be determined by the scientist.	
Observed Size	47 kDa	

### Properties

Form	Liquid
Purification	Affinity purification with immunogen.
Buffer	0.42% Potassium phosphate (pH 7.3), 0.87% NaCl, 0.01% Sodium azide and 30% Glycerol.
Preservative	0.01% Sodium azide
Stabilizer	30% Glycerol
Storage instruction	For continuous use, store undiluted antibody at 2-8°C for up to a week. For long-term storage, aliquot and store at -20°C or below. Storage in frost free freezers is not recommended. Avoid repeated freeze/thaw cycles. Suggest spin the vial prior to opening. The antibody solution should be gently mixed before use.
Note	For laboratory research only, not for drug, diagnostic or other use.

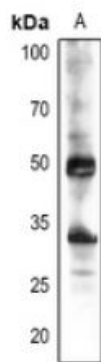
## Bioinformation

---

Gene Symbol	CYP38
Gene Full Name	cyclophilin 38
Background	Encodes a chloroplast cyclophilin functioning in the assembly and maintenance of photosystem II (PSII) supercomplexes.
Function	Required for the assembly and stabilization of PSII, but has no PPlases activity. [UniProt]
Calculated Mw	47;39 kDa
Cellular Localization	Plastid, chloroplast thylakoid lumen. [UniProt]

## Images

---



ARG67164 anti-CYP38 antibody WB image

Western blot: *Arabidopsis thaliana* stained with ARG67164 anti-CYP38 antibody.