

ARG67103
anti-PSIP1 / LEDGF antibodyPackage: 100 µl
Store at: -20°C

Summary

| | |
|---------------------|--|
| Product Description | Mouse Monoclonal antibody recognizes PSIP1 / LEDGF |
| Tested Reactivity | Hu, Ms, Rat, Mk |
| Tested Application | ELISA, ICC/IF, IHC-P, WB |
| Host | Mouse |
| Clonality | Monoclonal |
| Target Name | PSIP1 / LEDGF |
| Species | Human |
| Immunogen | Human PSIP1 / LEDGF recombinant fragment |
| Conjugation | Un-conjugated |
| Alternate Names | PSIP1; PC4 And SRSF1 Interacting Protein 1; LEDGF; DFS70; Lens Epithelium-Derived Growth Factor; PSIP2; P52; P75; PC4 And SFRS1 Interacting Protein 1; Dense Fine Speckles 70 KDa Protein; PC4 And SFRS1-Interacting Protein; CLL-Associated Antigen KW-7; PC4 And SFRS1 Interacting Protein 2; Transcriptional Coactivator P52/P75; Transcriptional Coactivator P75/P52; DFS 70; PAIP |

Application Instructions

| Application table | Application | Dilution |
|-------------------|-------------|----------------|
| | ELISA | 1:10000 |
| | ICC/IF | 1:200 - 1:1000 |
| | IHC-P | 1:200 - 1:1000 |
| | WB | 1:500-2000 |

Application Note * The dilutions indicate recommended starting dilutions and the optimal dilutions or concentrations should be determined by the scientist.

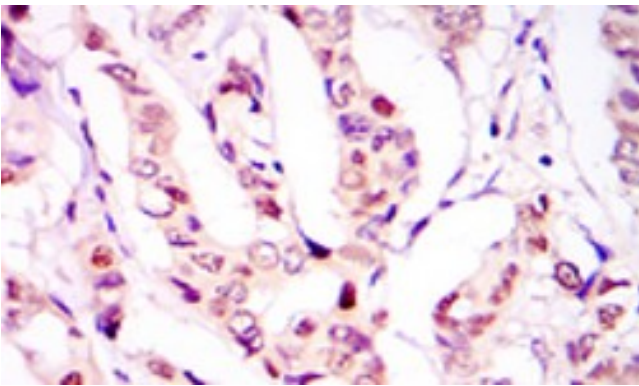
Properties

| | |
|---------------------|---|
| Form | Liquid |
| Purification | Affinity purification with immunogen. |
| Buffer | PBS (pH 7.4), 0.02% Sodium azide, 50% Glycerol and 0.5% BSA. |
| Preservative | 0.02% Sodium azide |
| Stabilizer | 50% Glycerol and 0.5% BSA |
| Storage instruction | For continuous use, store undiluted antibody at 2-8°C for up to a week. For long-term storage, aliquot and store at -20°C. Storage in frost free freezers is not recommended. Avoid repeated freeze/thaw cycles. Suggest spin the vial prior to opening. The antibody solution should be gently mixed before use. |

Bioinformation

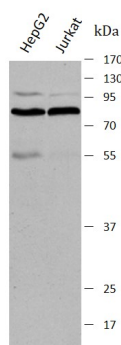
| | |
|-----------------------|--|
| Gene Symbol | PSIP1 |
| Gene Full Name | PC4 And SRSF1 Interacting Protein 1 |
| Background | Enables DNA-binding transcription factor binding activity; chromatin binding activity; and transcription coactivator activity. Involved in mRNA 5'-splice site recognition and positive regulation of transcription by RNA polymerase II. Located in heterochromatin; nuclear periphery; and nucleoplasm. |
| Function | Transcriptional coactivator involved in neuroepithelial stem cell differentiation and neurogenesis. Involved in particular in lens epithelial cell gene regulation and stress responses. May play an important role in lens epithelial to fiber cell terminal differentiation. May play a protective role during stress-induced apoptosis. Isoform 2 is a more general and stronger transcriptional coactivator. Isoform 2 may also act as an adapter to coordinate pre-mRNA splicing. Cellular cofactor for lentiviral integration. |
| Calculated Mw | 60 kDa |
| PTM | Citrullination; Isopeptide bond; Phosphoprotein; Ubl conjugation |
| Cellular Localization | Nucleus |

Images



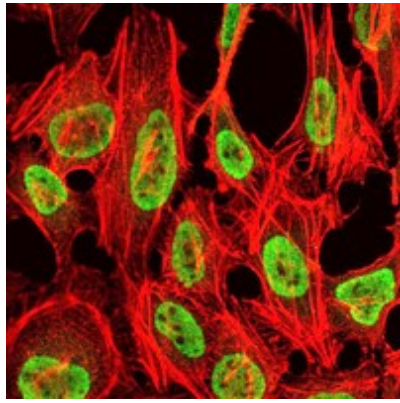
ARG67103 anti-PSIP1 / LEDGF antibody IHC-P image

Immunohistochemistry: Human breast cancer stained with ARG67103 anti-PSIP1 / LEDGF antibody.



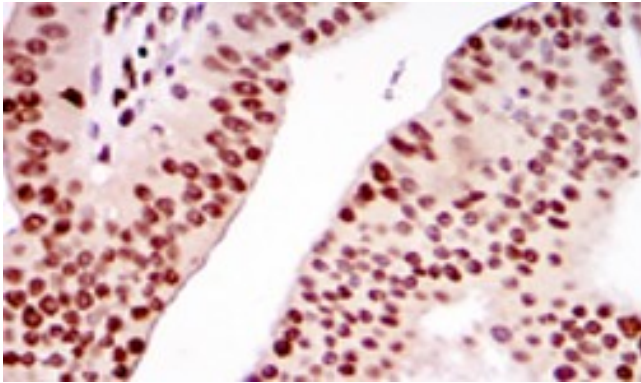
ARG67103 anti-PSIP1 / LEDGF antibody WB image

Western blot: HepG2 and Jurkat stained with ARG67103 anti-PSIP1 / LEDGF antibody.



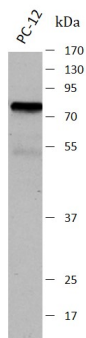
ARG67103 anti-PSIP1 / LEDGF antibody ICC/IF image

Immunofluorescence: NIH/3T3 stained with ARG67103 anti-PSIP1 / LEDGF antibody.



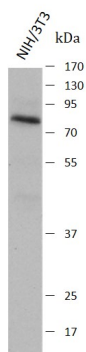
ARG67103 anti-PSIP1 / LEDGF antibody IHC-P image

Immunohistochemistry: Human ovarian cancer stained with ARG67103 anti-PSIP1 / LEDGF antibody.



ARG67103 anti-PSIP1 / LEDGF antibody WB image

Western blot: PC-12 stained with ARG67103 anti-PSIP1 / LEDGF antibody.



ARG67103 anti-PSIP1 / LEDGF antibody WB image

Western blot: NIH/3T3 stained with ARG67103 anti-PSIP1 / LEDGF antibody.

ARG67103 anti-PSIP1 / LEDGF antibody WB image

Western blot: Cos7 stained with ARG67103 anti-PSIP1 / LEDGF antibody.

