

ARG67095 anti-CLPS antibody [SQab30361]

Package: 100 µl
Store at: -20°C

Summary

Product Description	Rabbit Monoclonal antibody [SQab30361] recognizes CLPS
Tested Reactivity	Hu
Tested Application	IHC-P
Host	Rabbit
Clonality	Monoclonal
Clone	SQab30361
Isotype	IgG
Target Name	CLPS
Species	Human
Immunogen	Recombinant protein of Human CLPS.
Conjugation	Un-conjugated
Alternate Names	Colipase

Application Instructions

Application table	Application	Dilution
	IHC-P	1:100-1:200

Application Note * The dilutions indicate recommended starting dilutions and the optimal dilutions or concentrations should be determined by the scientist.

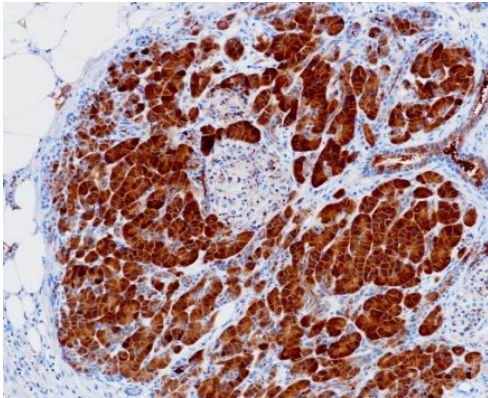
Properties

Form	Liquid
Purification	Purification with Protein A.
Buffer	PBS, 0.01% Sodium azide, 40% Glycerol and 0.05% BSA.
Preservative	0.01% Sodium azide
Stabilizer	40% Glycerol and 0.05% BSA
Storage instruction	For continuous use, store undiluted antibody at 2-8°C for up to a week. For long-term storage, aliquot and store at -20°C. Storage in frost free freezers is not recommended. Avoid repeated freeze/thaw cycles. Suggest spin the vial prior to opening. The antibody solution should be gently mixed before use.
Note	For laboratory research only, not for drug, diagnostic or other use.

Bioinformation

Gene Symbol	CLPS
Gene Full Name	colipase, pancreatic
Background	The protein encoded by this gene is a cofactor needed by pancreatic lipase for efficient dietary lipid hydrolysis. It binds to the C-terminal, non-catalytic domain of lipase, thereby stabilizing an active conformation and considerably increasing the overall hydrophobic binding site. The gene product allows lipase to anchor noncovalently to the surface of lipid micelles, counteracting the destabilizing influence of intestinal bile salts. This cofactor is only expressed in pancreatic acinar cells, suggesting regulation of expression by tissue-specific elements. Three transcript variants encoding different isoforms have been found for this gene. [provided by RefSeq, Nov 2011]
Function	Colipase is a cofactor of pancreatic lipase. It allows the lipase to anchor itself to the lipid-water interface. Without colipase the enzyme is washed off by bile salts, which have an inhibitory effect on the lipase. Enterostatin has a biological activity as a satiety signal. [UniProt]
Calculated Mw	12 kDa
Cellular Localization	Secreted. [UniProt]

Images



ARG67095 anti-CLPS antibody [SQab30361] IHC-P image

Immunohistochemistry: Human pancreas stained with ARG67095 anti-CLPS antibody [SQab30361] at 1:100 dilution.