

ARG67091
anti-CLEC4C / BDCA2 antibody [15E3]Package: 100 µg
Store at: 4°C

Summary

Product Description	Mouse Monoclonal antibody [15E3] recognizes CLEC4C / BDCA2
Tested Reactivity	Hu
Tested Application	ELISA, FACS, ICC/IF, IHC-Fr
Host	Mouse
Clonality	Monoclonal
Clone	15E3
Isotype	IgG1
Target Name	CLEC4C / BDCA2
Species	Human
Immunogen	CD303 ectodomain fused with human IgG Fc domain
Conjugation	Un-conjugated
Alternate Names	CD antigen CD303; BDCA-2; Blood dendritic cell antigen 2; Dendritic lectin; PRO34150; DLEC; C-type lectin domain family 4 member C; CLECSF7; CD303; CLECSF11; HECL; BDCA2; C-type lectin superfamily member 7

Application Instructions

Application table	Application	Dilution
	ELISA	Assay-dependent
	FACS	1-5 µg/ml
	ICC/IF	Assay-dependent
	IHC-Fr	Assay-dependent
Application Note	* The dilutions indicate recommended starting dilutions and the optimal dilutions or concentrations should be determined by the scientist.	

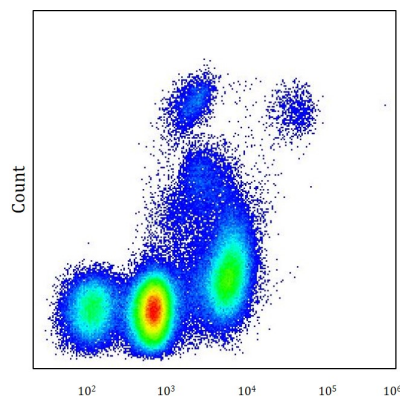
Properties

Form	Liquid
Purification	Purified
Buffer	PBS (pH 7.4) and 15 mM Sodium azide.
Preservative	15 mM Sodium azide
Concentration	1 mg/ml
Storage instruction	Aliquot and store in the dark at 2-8°C. Keep protected from prolonged exposure to light. Do not freeze. Suggest spin the vial prior to opening. The antibody solution should be gently mixed before use.

Bioinformation

Gene Symbol	CLEC4C
Gene Full Name	C-Type Lectin Domain Family 4 Member C
Background	This gene encodes a member of the C-type lectin/C-type lectin-like domain (CTL/CTLD) superfamily. Members of this family share a common protein fold and have diverse functions, such as cell adhesion, cell-cell signalling, glycoprotein turnover, and roles in inflammation and immune response. The encoded type 2 transmembrane protein may play a role in dendritic cell function. Two transcript variants encoding distinct isoforms have been identified for this gene. [provided by RefSeq, Jul 2008]

Images



ARG67091 anti-CLEC4C / BDCA2 antibody [15E3] FACS image

Flow Cytometry: Human whole blood stained with ARG67091 anti-CLEC4C / BDCA2 antibody [15E3] at 10 μ l / 100 μ l whole blood dilution.