

ARG67083 anti-Islet 1 antibody [SQab30356]

Package: 100 µl
Store at: -20°C

Summary

| | |
|---------------------|--|
| Product Description | Recombinant Rabbit Monoclonal antibody [SQab30356] recognizes Islet 1 |
| Tested Reactivity | Hu |
| Tested Application | IHC-P |
| Host | Rabbit |
| Clonality | Monoclonal |
| Clone | SQab30356 |
| Isotype | IgG |
| Target Name | Islet 1 |
| Species | Human |
| Immunogen | Synthetic peptide of Islet 1. |
| Conjugation | Un-conjugated |
| Alternate Names | ISL1; ISL LIM Homeobox 1; ISLET1; Isl-1; Insulin Gene Enhancer Protein ISL-1; Islet-1; ISL1 Transcription Factor, LIM/Homeodomain, (Islet-1) |

Application Instructions

| Application table | Application | Dilution |
|-------------------|-------------|-------------|
| | IHC-P | 1:100-1:200 |

Application Note
IHC-P: Antigen Retrieval: Heat mediation was performed in Tris/EDTA buffer (pH 9.0).
* The dilutions indicate recommended starting dilutions and the optimal dilutions or concentrations should be determined by the scientist.

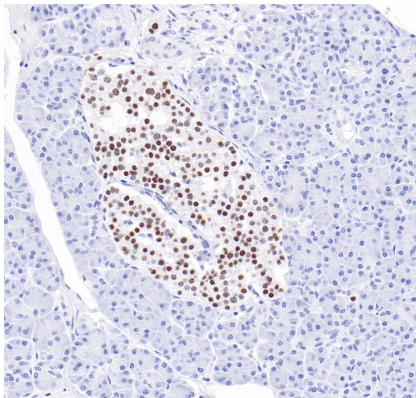
Properties

| | |
|---------------------|---|
| Form | Liquid |
| Purification | Purification with Protein A. |
| Buffer | PBS, 0.01% Sodium azide, 40% Glycerol and 0.05% BSA. |
| Preservative | 0.01% Sodium azide |
| Stabilizer | 40% Glycerol and 0.05% BSA |
| Storage instruction | For continuous use, store undiluted antibody at 2-8°C for up to a week. For long-term storage, aliquot and store at -20°C. Storage in frost free freezers is not recommended. Avoid repeated freeze/thaw cycles. Suggest spin the vial prior to opening. The antibody solution should be gently mixed before use. |
| Note | For laboratory research only, not for drug, diagnostic or other use. |

Bioinformation

| | |
|-----------------------|---|
| Gene Symbol | ISL1 |
| Gene Full Name | ISL LIM Homeobox 1 |
| Background | This gene encodes a member of the LIM/homeodomain family of transcription factors. The encoded protein binds to the enhancer region of the insulin gene, among others, and may play an important role in regulating insulin gene expression. The encoded protein is central to the development of pancreatic cell lineages and may also be required for motor neuron generation. Mutations in this gene have been associated with maturity-onset diabetes of the young. |
| Function | DNA-binding transcriptional activator. Recognizes and binds to the consensus octamer binding site 5'-ATAATTAA-3' in promoter of target genes. Plays a fundamental role in the gene regulatory network essential for retinal ganglion cell (RGC) differentiation. Cooperates with the transcription factor POU4F2 to achieve maximal levels of expression of RGC target genes and RGC fate specification in the developing retina. Involved in the specification of motor neurons in cooperation with LHX3 and LDB1 (By similarity). |
| Research Area | Cell Biology and Cellular Response antibody; Controls and Markers antibody; Developmental Biology antibody; Neuroscience antibody |
| Calculated Mw | 39 kDa |
| PTM | Phosphoprotein, Ubl conjugation |
| Cellular Localization | Nucleus |

Images



ARG67083 anti-Islet 1 antibody [SQab30356] IHC-P image

Immunohistochemistry: Human pancreas stained with ARG67083 anti-Islet 1 antibody [SQab30356].