

ARG67071 anti-SMARCB1 / BAF47 antibody antibody [SQab30346]

Package: 100 µl

Summary

Product Description	Recombinant Rabbit Monoclonal antibody [SQab30346] recognizes SMARCB1 / BAF47
Tested Reactivity	Hu
Tested Application	IHC-P
Host	Rabbit
Clonality	Monoclonal
Clone	SQab30346
Target Name	SMARCB1 / BAF47
Species	Human
Immunogen	Recombinant protein fragment of SMARCB1 / BAF47
Conjugation	Un-conjugated
Alternate Names	SMARCB1; SWI/SNF Related, Matrix Associated, Actin Dependent Regulator Of Chromatin, Subfamily B, Member 1; BAF47; PPP1R144; SNF5L1; INI-1; HSNFS; Sfh1p; Snr1; SNF5; RDT; SWI/SNF-Related Matrix-Associated Actin-Dependent Regulator Of Chromatin Subfamily B Member 1; Protein Phosphatase 1, Regulatory Subunit 144; Sucrose Nonfermenting, Yeast, Homolog-Like 1; Malignant Rhabdoid Tumor Suppressor; Integrase Interactor 1 Protein; BRG1-Associated Factor 47; SNF5 Homolog; HSNF5; Ini1; INI1; SWI/SNF-Related Matrix-Associated Protein; Integrase Interactor 1; SWNTS1; MRD15; RTPS1; CSS3

Application Instructions

Application table	Application	Dilution
	IHC-P	1:100-1:200

Application Note * The dilutions indicate recommended starting dilutions and the optimal dilutions or concentrations should be determined by the scientist.

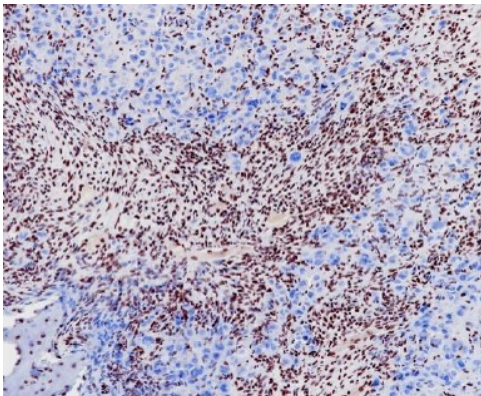
Properties

Form	Liquid
Purification	Purification with Protein A.
Buffer	PBS, 0.01% Sodium azide, 40% Glycerol and 0.05% BSA.
Preservative	0.01% Sodium azide
Stabilizer	40% Glycerol and 0.05% BSA
Storage instruction	-20°C
Note	For continuous use, store undiluted antibody at 2-8°C for up to a week. For long-term storage, aliquot and store at -20°C. Storage in frost free freezers is not recommended. Avoid repeated freeze/thaw cycles. Suggest spin the vial prior to opening. The antibody solution should be gently mixed before use.

Bioinformation

Gene Symbol	SMARCB1
Gene Full Name	SWI/SNF related, matrix associated, actin dependent regulator of chromatin, subfamily b, member 1
Background	The protein encoded by this gene is part of a complex that relieves repressive chromatin structures, allowing the transcriptional machinery to access its targets more effectively. The encoded nuclear protein may also bind to and enhance the DNA joining activity of HIV-1 integrase. This gene has been found to be a tumor suppressor, and mutations in it have been associated with malignant rhabdoid tumors. Alternatively spliced transcript variants have been found for this gene. [provided by RefSeq, Dec 2015]
Function	Core component of the BAF (hSWI/SNF) complex. This ATP-dependent chromatin-remodeling complex plays important roles in cell proliferation and differentiation, in cellular antiviral activities and inhibition of tumor formation. The BAF complex is able to create a stable, altered form of chromatin that constrains fewer negative supercoils than normal. This change in supercoiling would be due to the conversion of up to one-half of the nucleosomes on polynucleosomal arrays into asymmetric structures, termed altosomes, each composed of 2 histones octamers. Stimulates in vitro the remodeling activity of SMARCA4/BRG1/BAF190A. Involved in activation of CSF1 promoter. Belongs to the neural progenitors-specific chromatin remodeling complex (npBAF complex) and the neuron-specific chromatin remodeling complex (nBAF complex). During neural development a switch from a stem/progenitor to a postmitotic chromatin remodeling mechanism occurs as neurons exit the cell cycle and become committed to their adult state. The transition from proliferating neural stem/progenitor cells to postmitotic neurons requires a switch in subunit composition of the npBAF and nBAF complexes. As neural progenitors exit mitosis and differentiate into neurons, npBAF complexes which contain ACTL6A/BAF53A and PHF10/BAF45A, are exchanged for homologous alternative ACTL6B/BAF53B and DPF1/BAF45B or DPF3/BAF45C subunits in neuron-specific complexes (nBAF). The npBAF complex is essential for the self-renewal/proliferative capacity of the multipotent neural stem cells. The nBAF complex along with CREST plays a role regulating the activity of genes essential for dendrite growth. [UniProt]
Calculated Mw	44 kDa
PTM	Isopeptide bond, Phosphoprotein, Ubl conjugation. [UniProt]
Cellular Localization	Nucleus. [UniProt]

Images



ARG67071 anti-SMARCB1 / BAF47 antibody antibody [SQab30346]
IHC-P image

Immunohistochemistry: Human epithelioid sarcoma stained with ARG67071 anti-SMARCB1 / BAF47 antibody antibody [SQab30346] at 1:100 dilution.