

ARG67023
anti-UTRN / Utrophin antibodyPackage: 100 µl
Store at: -20°C

Summary

Product Description	Rabbit Polyclonal antibody recognizes UTRN / Utrophin
Tested Reactivity	Hu
Tested Application	IHC-P
Host	Rabbit
Clonality	Polyclonal
Isotype	IgG
Target Name	UTRN / Utrophin
Species	Human
Immunogen	Synthetic peptide corresponding to a region of Human UTRN / Utrophin.
Conjugation	Un-conjugated
Alternate Names	Utrophin; DRP1; DMDL; DRP; Dystrophin-Related Protein; Utrophin (Homologous To Dystrophin); DRP-1

Application Instructions

Application table	Application	Dilution
	IHC-P	1:50 - 1:300

Application Note IHC-P: Antigen retrieval: boil tissue sections in 10 mM citrate buffer (pH 6.0) for 10-20 min and allow samples to cool to RT before staining.
* The dilutions indicate recommended starting dilutions and the optimal dilutions or concentrations should be determined by the scientist.

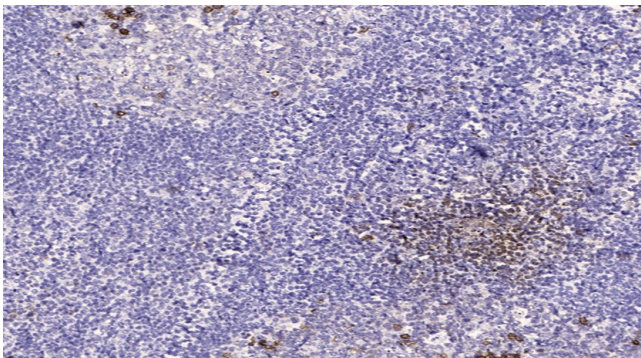
Properties

Form	Liquid
Purification	Affinity purification with immunogen.
Buffer	PBS, 0.02% Sodium azide and 50% Glycerol.
Preservative	0.02% Sodium azide
Stabilizer	50% Glycerol
Concentration	1 mg/ml
Storage instruction	For continuous use, store undiluted antibody at 2-8°C for up to a week. For long-term storage, aliquot and store at -20°C. Storage in frost free freezers is not recommended. Avoid repeated freeze/thaw cycles. Suggest spin the vial prior to opening. The antibody solution should be gently mixed before use.
Note	For laboratory research only, not for drug, diagnostic or other use.

Bioinformation

Gene Symbol	UTRN
Gene Full Name	utrophin
Background	This gene shares both structural and functional similarities with the dystrophin gene. It contains an actin-binding N-terminus, a triple coiled-coil repeat central region, and a C-terminus that consists of protein-protein interaction motifs which interact with dystroglycan protein components. The protein encoded by this gene is located at the neuromuscular synapse and myotendinous junctions, where it participates in post-synaptic membrane maintenance and acetylcholine receptor clustering. Mouse studies suggest that this gene may serve as a functional substitute for the dystrophin gene and therefore, may serve as a potential therapeutic alternative to muscular dystrophy which is caused by mutations in the dystrophin gene. Alternative splicing of the utrophin gene has been described; however, the full-length nature of these variants has not yet been determined. [provided by RefSeq, Jul 2008]
Function	May play a role in anchoring the cytoskeleton to the plasma membrane. [UniProt]
Calculated Mw	395 kDa
PTM	Phosphoprotein; Showing features for chain, modified residue. [UniProt]
Cellular Localization	Cell membrane; Cytoplasm; Cytoskeleton; Membrane; Postsynaptic cell membrane; Synapse. [UniProt]

Images



ARG67023 anti-UTRN / Utrophin antibody IHC-P image

Immunohistochemistry: Paraffin-embedded Human tonsil tissue was stained with ARG67023 anti-UTRN / Utrophin antibody at 1:200 dilution. Antigen Retrieval: Boil tissue section in Tris-EDTA (pH 9.0) for 20 min.