

## ARG67021 anti-Nephrin antibody

Package: 100 µl  
Store at: -20°C

### Summary

Product Description	Rabbit Polyclonal antibody recognizes Nephrin
Tested Reactivity	Hu, Rat
Predict Reactivity	Ms
Tested Application	IHC-P, WB
Host	Rabbit
Clonality	Polyclonal
Isotype	IgG
Target Name	Nephrin
Species	Human
Immunogen	Synthetic peptide corresponding to C-term region of human nephrin.
Conjugation	Un-conjugated
Alternate Names	CNF; NPHN; Renal glomerulus-specific cell adhesion receptor; nephrin; Nephrin

### Application Instructions

Application table	Application	Dilution
	IHC-P	1:50 - 1:100
	WB	1:500 - 1:1000
Application Note	* The dilutions indicate recommended starting dilutions and the optimal dilutions or concentrations should be determined by the scientist.	
Positive Control	Human Brain, HEK293, PC12	
Observed Size	~135 kDa	

### Properties

Form	Liquid
Purification	Affinity purification with immunogen.
Buffer	0.42% Potassium phosphate (pH 7.3), 0.87% NaCl, 0.01% Sodium azide and 30% Glycerol.
Preservative	0.01% Sodium azide
Stabilizer	30% Glycerol
Storage instruction	For continuous use, store undiluted antibody at 2-8°C for up to a week. For long-term storage, aliquot and store at -20°C or below. Storage in frost free freezers is not recommended. Avoid repeated freeze/thaw cycles. Suggest spin the vial prior to opening. The antibody solution should be gently mixed before use.

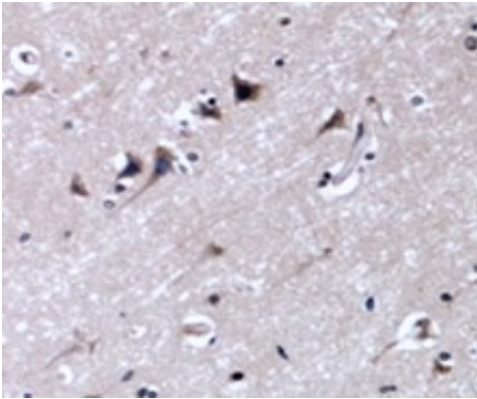
Note

For laboratory research only, not for drug, diagnostic or other use.

## Bioinformation

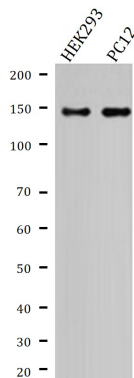
Gene Symbol	NPHS1
Gene Full Name	nephrosis 1, congenital, Finnish type (nephrin)
Background	This gene encodes a member of the immunoglobulin family of cell adhesion molecules that functions in the glomerular filtration barrier in the kidney. The gene is primarily expressed in renal tissues, and the protein is a type-1 transmembrane protein found at the slit diaphragm of glomerular podocytes. The slit diaphragm is thought to function as an ultrafilter to exclude albumin and other plasma macromolecules in the formation of urine. Mutations in this gene result in Finnish-type congenital nephrosis 1, characterized by severe proteinuria and loss of the slit diaphragm and foot processes.[provided by RefSeq, Oct 2009]
Function	Seems to play a role in the development or function of the kidney glomerular filtration barrier. Regulates glomerular vascular permeability. May anchor the podocyte slit diaphragm to the actin cytoskeleton. Plays a role in skeletal muscle formation through regulation of myoblast fusion (By similarity). [UniProt]
Research Area	Signaling Transduction antibody
Calculated Mw	135 kDa
PTM	Phosphorylated at Tyr-1193 by FYN, leading to the recruitment and activation of phospholipase C-gamma-1/PLCG1.
Cellular Localization	Membrane

## Images



ARG67021 anti-Nephrin antibody IHC-P image

Immunohistochemistry: Paraffin-embedded Human brain tissue stained with ARG67021 anti-Nephrin antibody.



ARG67021 anti-Nephrin antibody WB image

Western blot: 1) HEK293, and 2) PC12 cell lysates stained with ARG67021 anti-Nephrin antibody.