

## ARG67011 anti-EEA1 antibody

Package: 100 µl  
Store at: -20°C

### Summary

Product Description	Rabbit Polyclonal antibody recognizes EEA1
Tested Reactivity	Hu, Ms, Rat
Tested Application	ICC/IF, IHC-P, WB
Host	Rabbit
Clonality	Polyclonal
Isotype	IgG
Target Name	EEA1
Species	Human
Immunogen	Synthetic peptide corresponding to Human EEA1.
Conjugation	Un-conjugated
Alternate Names	Early endosome antigen 1; Zinc finger FYVE domain-containing protein 2; MST105; MSTP105; ZFYVE2; Endosome-associated protein p162

### Application Instructions

Application table	Application	Dilution
	ICC/IF	1:500 - 1:1000
	IHC-P	1:100 - 1:300
	WB	1:1000 - 1:4000
Application Note	* The dilutions indicate recommended starting dilutions and the optimal dilutions or concentrations should be determined by the scientist.	
Positive Control	Colorectal cancer, MCF7, A549	
Observed Size	~170 kDa	

### Properties

Form	Liquid
Purification	Affinity purified.
Buffer	100 mM Tris Glycine (pH 7.0), 0.025% ProClin 300 and 20% Glycerol.
Preservative	0.025% ProClin 300
Stabilizer	20% Glycerol
Storage instruction	For continuous use, store undiluted antibody at 2-8°C for up to a week. For long-term storage, aliquot and store at -20°C. Storage in frost free freezers is not recommended. Avoid repeated freeze/thaw cycles. Suggest spin the vial prior to opening. The antibody solution should be gently mixed before use.

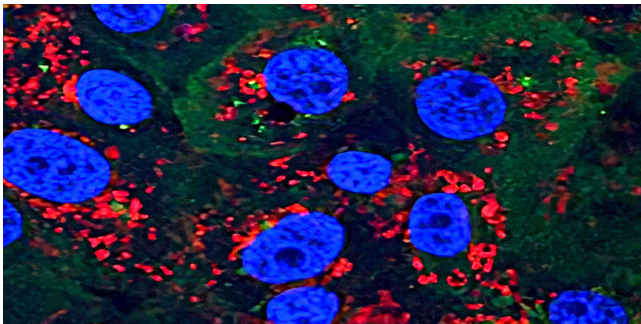
Note For laboratory research only, not for drug, diagnostic or other use.

## Bioinformation

---

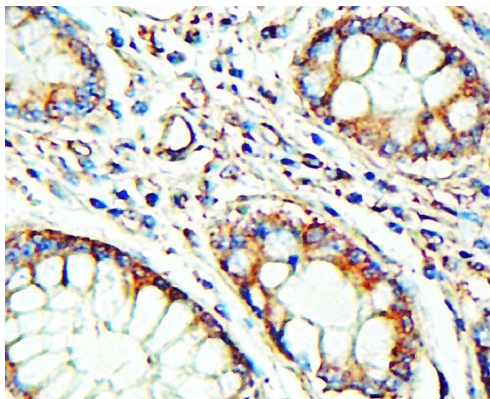
Gene Symbol	EEA1
Gene Full Name	early endosome antigen 1
Background	Enables 1-phosphatidylinositol binding activity; GTP-dependent protein binding activity; and protein homodimerization activity. Involved in endocytosis; vesicle fusion; and viral RNA genome replication. Located in cytosol and early endosome. Is extrinsic component of plasma membrane. [provided by Alliance of Genome Resources, Apr 2022]
Function	Binds phospholipid vesicles containing phosphatidylinositol 3-phosphate and participates in endosomal trafficking. [UniProt]
Calculated Mw	162 kDa
Cellular Localization	Cytoplasm. Early endosome membrane; Peripheral membrane protein. [UniProt]

## Images



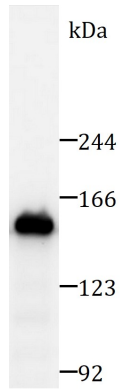
ARG67011 anti-EEA1 antibody ICC/IF image

Immunofluorescence: MCF7 cells were fixed with 4% paraformaldehyde at RT for 10 min, permeabilized with 0.1% NP-40 at RT for 10 min and then cells were blocked with 5% BSA at RT for 30 min and stained with ARG67011 anti-EEA1 antibody (red) at 1:500 dilution at 4°C for overnight. DAPI (blue) was used for nuclear staining.



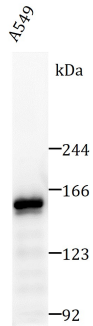
ARG67011 anti-EEA1 antibody IHC-P image

Immunohistochemistry: Paraffin-embedded Human colon cancer tissue stained with ARG67011 anti-EEA1 antibody at 1:100 dilution. Antigen Retrieval: Boil tissue section in Citrate buffer (pH 6.0).



ARG67011 anti-EEA1 antibody WB image

Western blot: A549 cell lysate stained with ARG67011 anti-EEA1 antibody at 1:2000 dilution, overnight at 4°C.



ARG67011 anti-EEA1 antibody WB image

Western blot: Mouse Testis tissue lysate stained with ARG67011 anti-EEA1 antibody at 1:2000 dilution, overnight at 4°C.