

ARG67006
anti-AIF1 / Iba 1 antibodyPackage: 100 µl
Store at: -20°C

Summary

Product Description	Mouse Monoclonal antibody recognizes AIF1 / Iba 1
Tested Reactivity	Hu, Ms
Predict Reactivity	Rat
Tested Application	IHC-Fr, IHC-P, WB
Host	Mouse
Clonality	Monoclonal
Isotype	IgG2a
Target Name	AIF1 / Iba 1
Species	Human
Immunogen	Recombinant protein corresponding to a region of Human AIF1 / Iba1.
Conjugation	Un-conjugated
Alternate Names	Ionized calcium-binding adapter molecule 1; Allograft inflammatory factor 1; IBA1; IRT-1; IRT1; AIF-1; Protein G1

Application Instructions

Application table	Application	Dilution
	IHC-Fr	1:100 - 1:200
	IHC-P	1:50 - 1:100
	WB	1:500 - 1:1000
Application Note	IHC-P: Antigen Retrieval: Boil tissue section in Sodium Citrate buffer (pH 6.0) followed by cooling at RT for 20 min. * The dilutions indicate recommended starting dilutions and the optimal dilutions or concentrations should be determined by the scientist.	
Positive Control	Brain tissue	
Observed Size	~15 kDa	

Properties

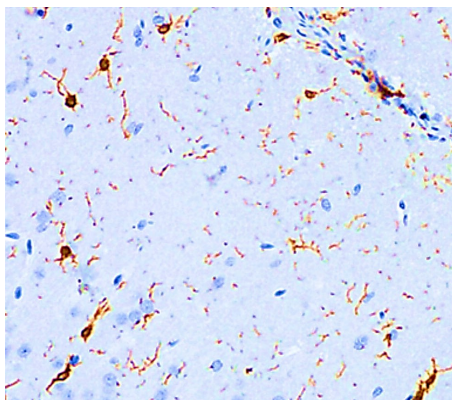
Form	Liquid
Purification	Affinity purified.
Buffer	100 mM Tris Glycine (pH 7.0), 0.025% ProClin 300 and 20% Glycerol.
Preservative	0.025% ProClin 300
Stabilizer	20% Glycerol

Storage instruction	For continuous use, store undiluted antibody at 2-8°C for up to a week. For long-term storage, aliquot and store at -20°C or below. Storage in frost free freezers is not recommended. Avoid repeated freeze/thaw cycles. Suggest spin the vial prior to opening. The antibody solution should be gently mixed before use.
Note	For laboratory research only, not for drug, diagnostic or other use.

Bioinformation

Gene Symbol	AIF1
Gene Full Name	allograft inflammatory factor 1
Background	AIF1 / Iba 1 is a protein that binds actin and calcium. This gene is induced by cytokines and interferon and may promote macrophage activation and growth of vascular smooth muscle cells and T-lymphocytes. Polymorphisms in this gene may be associated with systemic sclerosis. Alternative splicing results in multiple transcript variants, but the full-length and coding nature of some of these variants is not certain. [provided by RefSeq, Jan 2016]
Function	AIF1 / Iba 1 is an Actin-binding protein. It enhances membrane ruffling and RAC activation. Enhances the actin-bundling activity of LCP1. Binds calcium. Plays a role in RAC signaling and in phagocytosis. May play a role in macrophage activation and function. Promotes the proliferation of vascular smooth muscle cells and of T-lymphocytes. Enhances lymphocyte migration. Plays a role in vascular inflammation. [UniProt]
Highlight	Related Antibody Duos and Panels: ARG30324 Neuroinflammation Antibody Panel Related products: AIF1 antibodies ; AIF1 Duos / Panels ; Anti-Mouse IgG secondary antibodies ;
Research Area	Cell Biology and Cellular Response antibody; Immune System antibody; Metabolism antibody; Neuroscience antibody; Activated Macrophage/Microglia Study antibody; Neuroinflammation Study antibody; Macroglial Marker antibody
Calculated Mw	17 kDa
PTM	Phosphorylated on serine residues. [UniProt]

Images



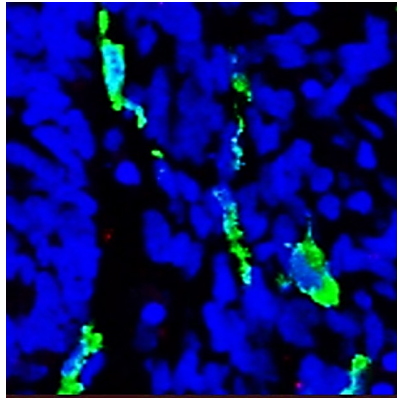
ARG67006 anti-AIF1 / Iba 1 antibody IHC-P image

Immunohistochemistry: Paraffin-embedded mouse brain tissue stained with ARG67006 anti-AIF1 / Iba 1 antibody at 1:200 dilution. Antigen Retrieval: Boil tissue section in Citrate buffer (pH 6.0).



ARG67006 anti-AIF1 / Iba 1 antibody WB image

Western blot: 45 μ g of THP-1 cell lysate stained with ARG67006 anti-AIF1 / Iba 1 antibody at 1:500 dilution, overnight at 4°C.



ARG67006 anti-AIF1 / Iba 1 antibody IHC-Fr image

Immunohistochemistry: Frozen section of Mouse hippocampus tissue stained with ARG67006 anti-AIF1 / Iba 1 antibody (green) at 1:200 dilution. Nuclei are stained with DAPI (blue).