

ARG66992 anti-Occludin antibody

Package: 100 µl
Store at: -20°C

Summary

Product Description	Rabbit Polyclonal antibody recognizes Occludin
Tested Reactivity	Hu, Ms
Predict Reactivity	Rat
Tested Application	IHC-P, WB
Host	Rabbit
Clonality	Polyclonal
Isotype	IgG
Target Name	Occludin
Species	Human
Immunogen	Synthetic peptide corresponding to C-terminus of human occludin.
Conjugation	Un-conjugated
Alternate Names	PPP1R115; BLCPMG; Occludin

Application Instructions

Application table	Application	Dilution
	IHC-P	1:50 - 1:150
	WB	1:500 - 1:2000
Application Note	IHC-P: Antigen Retrieval: Boil tissue section in 10mM citrate buffer, pH 6.0 for 10 min followed by cooling at RT for 20 min. Incubation Time: 60 min at RT. * The dilutions indicate recommended starting dilutions and the optimal dilutions or concentrations should be determined by the scientist.	
Observed Size	60-70 kDa	

Properties

Form	Liquid
Purification	Affinity purified.
Buffer	100 mM Tris Glycine (pH 7.0), 0.025% ProClin 300, 1%BSA and 20% Glycerol.
Preservative	0.025% ProClin 300
Stabilizer	1%BSA and 20% Glycerol
Storage instruction	For continuous use, store undiluted antibody at 2-8°C for up to a week. For long-term storage, aliquot and store at -20°C or below. Storage in frost free freezers is not recommended. Avoid repeated freeze/thaw cycles. Suggest spin the vial prior to opening. The antibody solution should be gently mixed

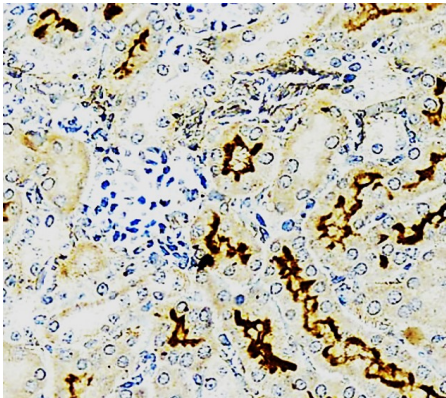
before use.

Note For laboratory research only, not for drug, diagnostic or other use.

Bioinformation

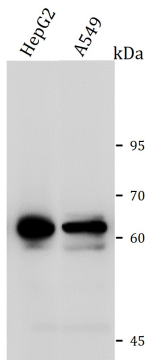
Gene Symbol	OCLN
Gene Full Name	occludin
Background	This gene encodes an integral membrane protein that is required for cytokine-induced regulation of the tight junction paracellular permeability barrier. Mutations in this gene are thought to be a cause of band-like calcification with simplified gyration and polymicrogyria (BLC-PMG), an autosomal recessive neurologic disorder that is also known as pseudo-TORCH syndrome. Alternative splicing results in multiple transcript variants. A related pseudogene is present 1.5 Mb downstream on the q arm of chromosome 5. [provided by RefSeq, Apr 2011]
Function	May play a role in the formation and regulation of the tight junction (TJ) paracellular permeability barrier. It is able to induce adhesion when expressed in cells lacking tight junctions. [UniProt]
Highlight	Related products: Occludin antibodies ; Occludin Duos / Panels ; Anti-Rabbit IgG secondary antibodies ;
Research Area	Signaling Transduction antibody
Calculated Mw	59 kDa
PTM	Dephosphorylated by PTPRJ. The tyrosine phosphorylation on Tyr-398 and Tyr-402 reduces its ability to interact with TJP1. Phosphorylation at Ser-490 also attenuates the interaction with TJP1.
Cellular Localization	Membrane

Images



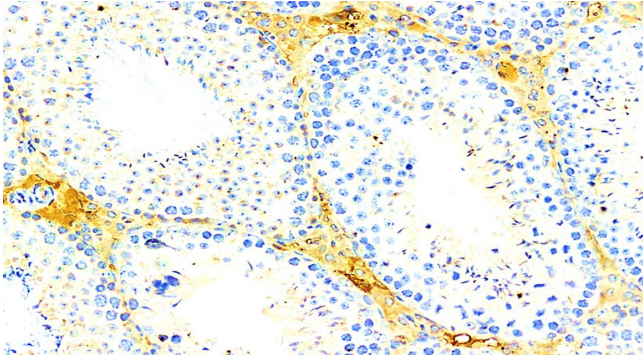
ARG66992 anti-Occludin antibody IHC-P image

Immunohistochemistry: Paraffin-embedded mouse tissue stained with ARG66992 anti-Occludin antibody.



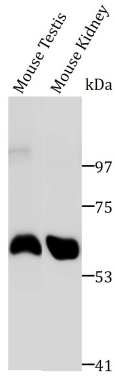
ARG66992 anti-Occludin antibody WB image

Western blot: HepG2 and A549 stained with ARG66992 anti-Occludin antibody at 7.5% SDS-PAGE, 1:1000 dilution.



ARG66992 anti-Occludin antibody IHC-P image

Immunohistochemistry: Formalin-fixed and paraffin-embedded prostate cancer tissue stained with ARG66992 anti-Occludin antibody at 1:100 dilution.. Antigen Retrieval: Heat mediated was performed using Tris/EDTA buffer pH 6.0.



ARG66992 anti-Occludin antibody WB image

Western blot: Mouse kidney and mouse testis stained with ARG66992 anti-Occludin antibody at 7.5% SDS-PAGE, 1:1000 dilution.