

ARG66983 anti-EpCAM antibody

Package: 100 µl
Store at: -20°C

Summary

Product Description	Rabbit Polyclonal antibody recognizes EpCAM
Tested Reactivity	Hu, Ms
Tested Application	FACS, ICC/IF, IHC-P, WB
Host	Rabbit
Clonality	Polyclonal
Isotype	IgG
Target Name	EpCAM
Species	Human
Immunogen	Synthetic peptide within the extracellular domain of Human EpCAM.
Conjugation	Un-conjugated
Alternate Names	MIC18; EGP; Tumor-associated calcium signal transducer 1; Epithelial glycoprotein 314; KSA; Ep-CAM; Epithelial cell surface antigen; Adenocarcinoma-associated antigen; HNPCC8; Cell surface glycoprotein Trop-1; EGP40; TACSTD1; KS1/4; hEGP314; Major gastrointestinal tumor-associated protein GA733-2; M4S1; MK-1; Epithelial glycoprotein; KS 1/4 antigen; ESA; DIAR5; EGP314; Epithelial cell adhesion molecule; EGP-2; TROP1; CD antigen CD326

Application Instructions

Application table	Application	Dilution
	FACS	1:50 - 1:200
	ICC/IF	1:200 - 1:400
	IHC-P	1:100 - 1:150
	WB	1:1000 - 1:2000
Application Note	* The dilutions indicate recommended starting dilutions and the optimal dilutions or concentrations should be determined by the scientist.	
Observed Size	40 kDa	

Properties

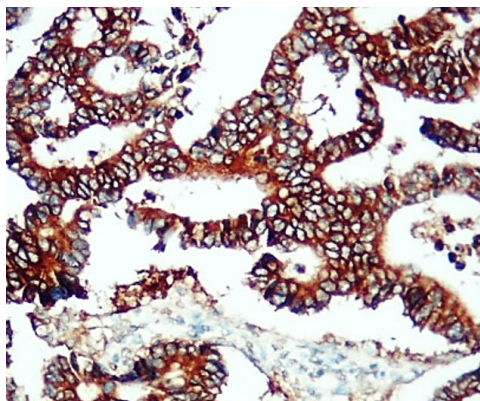
Form	Liquid
Purification	Affinity purified.
Buffer	100 mM Tris Glycine (pH 7.0), 0.025% ProClin 300 and 20% Glycerol.
Preservative	0.025% ProClin 300
Stabilizer	20% Glycerol

Storage instruction	For continuous use, store undiluted antibody at 2-8°C for up to a week. For long-term storage, aliquot and store at -20°C. Storage in frost free freezers is not recommended. Avoid repeated freeze/thaw cycles. Suggest spin the vial prior to opening. The antibody solution should be gently mixed before use.
Note	For laboratory research only, not for drug, diagnostic or other use.

Bioinformation

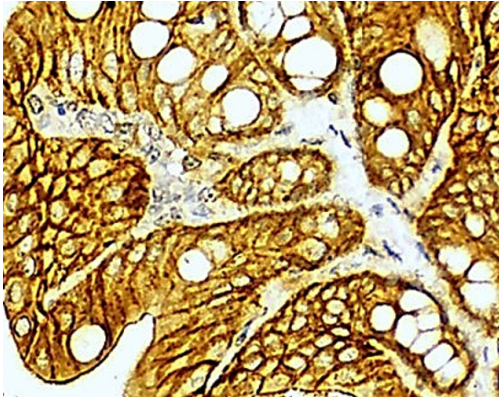
Gene Symbol	EPCAM
Gene Full Name	epithelial cell adhesion molecule
Background	EpCAM is a carcinoma-associated antigen and is a member of a family that includes at least two type I membrane proteins. This antigen is expressed on most normal epithelial cells and gastrointestinal carcinomas and functions as a homotypic calcium-independent cell adhesion molecule. The antigen is being used as a target for immunotherapy treatment of human carcinomas. Mutations in this gene result in congenital tufting enteropathy. [provided by RefSeq, Dec 2008]
Function	EpCAM may act as a physical homophilic interaction molecule between intestinal epithelial cells (IECs) and intraepithelial lymphocytes (IELs) at the mucosal epithelium for providing immunological barrier as a first line of defense against mucosal infection. Plays a role in embryonic stem cells proliferation and differentiation. Up-regulates the expression of FABP5, MYC and cyclins A and E. [UniProt]
Research Area	Controls and Markers antibody; Epithelial Marker antibody; Circulating Tumor Cells BioMarker antibody
Calculated Mw	35 kDa
PTM	Hyperglycosylated in carcinoma tissue as compared with autologous normal epithelia. Glycosylation at Asn-198 is crucial for protein stability. [UniProt]
Cellular Localization	Lateral cell membrane; Single-pass type I membrane protein. Cell junction, tight junction. Note=Colocalizes with CLDN7 at the lateral cell membrane and tight junction. [UniProt]

Images



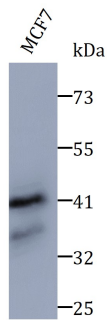
ARG66983 anti-EpCAM antibody IHC-P image

Immunohistochemistry: Paraffin-embedded human cancer tissue stained with ARG66983 anti-EpCAM antibody at 1:200 dilution.



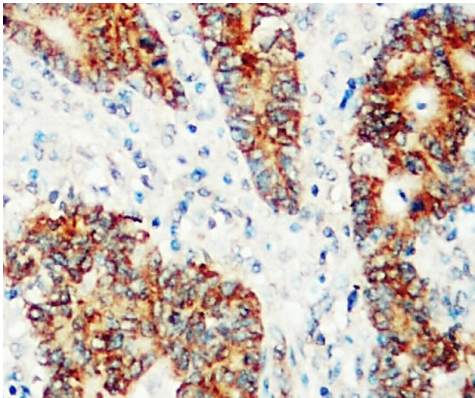
ARG66983 anti-EpCAM antibody IHC-P image

Immunohistochemistry: Paraffin-embedded human tissue stained with ARG66983 anti-EpCAM antibody at 1:200 dilution.



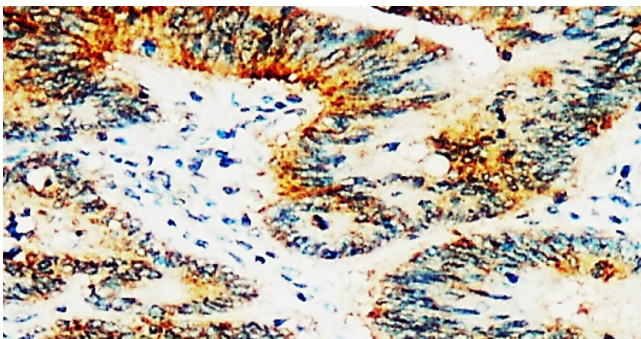
ARG66983 anti-EpCAM antibody WB image

Western blot: MCF7 cell lysate stained with ARG66983 anti-EpCAM antibody at 1:1000 dilution, overnight at 4°C.



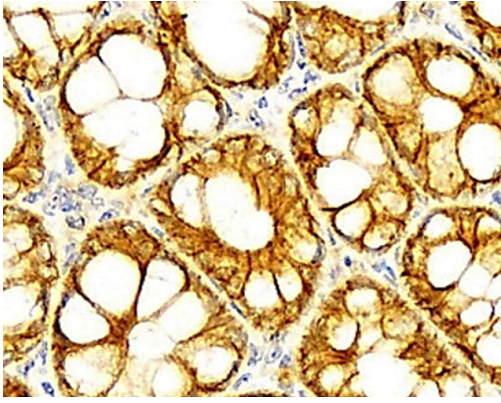
ARG66983 anti-EpCAM antibody IHC-P image

Immunohistochemistry: Paraffin-embedded human cancer tissue stained with ARG66983 anti-EpCAM antibody at 1:200 dilution.



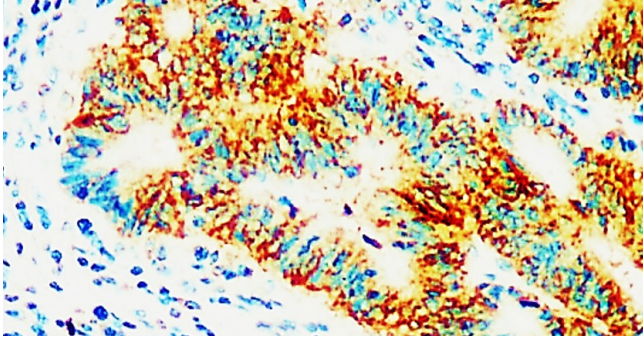
ARG66983 anti-EpCAM antibody IHC-P image

Immunohistochemistry: Paraffin-embedded human cancer tissue stained with ARG66983 anti-EpCAM antibody at 1:200 dilution.



ARG66983 anti-EpCAM antibody IHC-P image

Immunohistochemistry: Paraffin-embedded human tissue stained with ARG66983 anti-EpCAM antibody at 1:200 dilution.



ARG66983 anti-EpCAM antibody IHC-P image

Immunohistochemistry: Paraffin-embedded human cancer tissue stained with ARG66983 anti-EpCAM antibody at 1:200 dilution.
