

ARG66978
anti-CD62P / P-Selectin antibodyPackage: 100 µl
Store at: -20°C

Summary

| | |
|---------------------|--|
| Product Description | Rabbit Polyclonal antibody recognizes CD62P / P-Selectin |
| Tested Reactivity | Hu, Ms |
| Predict Reactivity | Rat |
| Tested Application | IHC-P, WB |
| Host | Rabbit |
| Clonality | Polyclonal |
| Isotype | IgG |
| Target Name | CD62P / P-Selectin |
| Species | Human |
| Immunogen | Synthetic peptide corresponding to the extracellular domain of Human CD62P / P-Selectin. |
| Conjugation | Un-conjugated |
| Alternate Names | PADGEM; CD62; Platelet activation dependent granule-external membrane protein; CD62 antigen-like family member P; GMP140; PSEL; Granule membrane protein 140; CD62P; CD antigen CD62P; Leukocyte-endothelial cell adhesion molecule 3; GRMP; GMP-140; P-selectin; LECAM3 |

Application Instructions

| | | |
|-------------------|---|----------------|
| Application table | Application | Dilution |
| | IHC-P | 1:100 - 1:200 |
| | WB | 1:500 - 1:1000 |
| Application Note | IHC-P: Antigen Retrieval: Boil tissue section in Citrate buffer (pH 6.0). * The dilutions indicate recommended starting dilutions and the optimal dilutions or concentrations should be determined by the scientist. | |
| Positive Control | Kidney | |
| Observed Size | ~120 - 140 kDa | |

Properties

| | |
|---------------------|---|
| Form | Liquid |
| Purification | Affinity purified. |
| Buffer | 100 mM Tris Glycine (pH 7.0), 0.025% ProClin 300 and 20% Glycerol. |
| Preservative | 0.025% ProClin 300 |
| Stabilizer | 20% Glycerol |
| Storage instruction | For continuous use, store undiluted antibody at 2-8°C for up to a week. For long-term storage, aliquot and store at -20°C or below. Storage in frost free freezers is not recommended. Avoid repeated |

freeze/thaw cycles. Suggest spin the vial prior to opening. The antibody solution should be gently mixed before use.

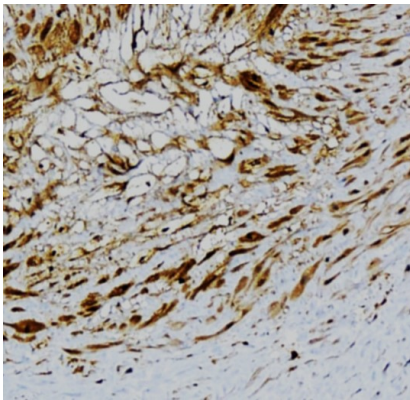
Note

For laboratory research only, not for drug, diagnostic or other use.

Bioinformation

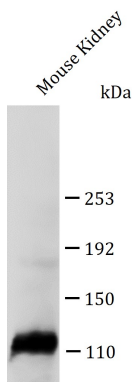
| | |
|----------------|--|
| Gene Symbol | SELP |
| Gene Full Name | selectin P (granule membrane protein 140kDa, antigen CD62) |
| Background | This gene encodes a 140 kDa protein that is stored in the alpha-granules of platelets and Weibel-Palade bodies of endothelial cells. This protein redistributes to the plasma membrane during platelet activation and degranulation and mediates the interaction of activated endothelial cells or platelets with leukocytes. The membrane protein is a calcium-dependent receptor that binds to sialylated forms of Lewis blood group carbohydrate antigens on neutrophils and monocytes. Alternative splice variants may occur but are not well documented. [provided by RefSeq, Jul 2008] |
| Function | Ca(2+)-dependent receptor for myeloid cells that binds to carbohydrates on neutrophils and monocytes. Mediates the interaction of activated endothelial cells or platelets with leukocytes. The ligand recognized is sialyl-Lewis X. Mediates rapid rolling of leukocyte rolling over vascular surfaces during the initial steps in inflammation through interaction with PSGL1. [UniProt] |
| Calculated Mw | 86 - 140 kDa (glycosylated) |

Images



ARG66978 anti-CD62P / P-Selectin antibody IHC-P image

Immunohistochemistry: Paraffin-embedded Human tissue stained with ARG66978 anti-CD62P / P-Selectin antibody at 1:100 dilution. Antigen Retrieval: Boil tissue section in Citrate buffer (pH 6.0).



ARG66978 anti-CD62P / P-Selectin antibody WB image

Western blot: 50 µg of Mouse Kidney tissue lysate stained with ARG66978 anti-CD62P / P-Selectin antibody at 1:500 dilution, overnight at 4°C.