

ARG66977 anti-CD62E / E-Selectin antibody

Package: 100 µl
Store at: -20°C

Summary

| | |
|---------------------|--|
| Product Description | Rabbit Polyclonal antibody recognizes CD62E / E-Selectin |
| Tested Reactivity | Hu, Ms |
| Predict Reactivity | Rat |
| Tested Application | IHC-P, WB |
| Host | Rabbit |
| Clonality | Polyclonal |
| Isotype | IgG |
| Target Name | CD62E / E-Selectin |
| Species | Human |
| Immunogen | Synthetic peptide corresponding to the extracellular domain of CD62E / E-Selectin. |
| Conjugation | Un-conjugated |
| Alternate Names | E-selectin; CD62E; ELAM-1; ELAM1; CD antigen CD62E; ELAM; Endothelial leukocyte adhesion molecule 1; Leukocyte-endothelial cell adhesion molecule 2; ESEL; LECAM2; CD62 antigen-like family member E |

Application Instructions

| | | |
|-------------------|--|----------------|
| Application table | Application | Dilution |
| | IHC-P | 1:50 - 1:200 |
| | WB | 1:500 - 1:1000 |
| Application Note | * The dilutions indicate recommended starting dilutions and the optimal dilutions or concentrations should be determined by the scientist. | |
| Positive Control | Umbilical cord | |
| Observed Size | 100-120 kDa | |

Properties

| | |
|---------------------|---|
| Form | Liquid |
| Purification | Affinity purified. |
| Buffer | 100 mM Tris Glycine (pH 7.0), 0.025% ProClin 300 and 20% Glycerol. |
| Preservative | 0.025% ProClin 300 |
| Stabilizer | 20% Glycerol |
| Storage instruction | For continuous use, store undiluted antibody at 2-8°C for up to a week. For long-term storage, aliquot and store at -20°C. Storage in frost free freezers is not recommended. Avoid repeated freeze/thaw cycles. Suggest spin the vial prior to opening. The antibody solution should be gently mixed before use. |

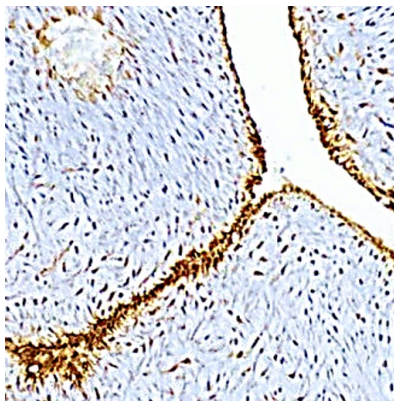
Note

For laboratory research only, not for drug, diagnostic or other use.

Bioinformation

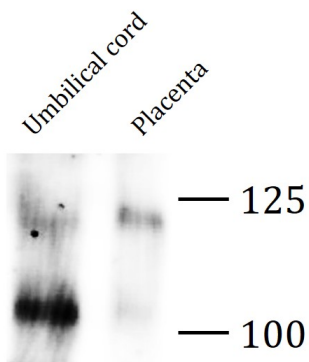
| | |
|----------------|---|
| Gene Symbol | SELE |
| Gene Full Name | selectin E |
| Background | The protein encoded by this gene is found in cytokine-stimulated endothelial cells and is thought to be responsible for the accumulation of blood leukocytes at sites of inflammation by mediating the adhesion of cells to the vascular lining. It exhibits structural features such as the presence of lectin- and EGF-like domains followed by short consensus repeat (SCR) domains that contain 6 conserved cysteine residues. These proteins are part of the selectin family of cell adhesion molecules. Adhesion molecules participate in the interaction between leukocytes and the endothelium and appear to be involved in the pathogenesis of atherosclerosis. [provided by RefSeq, Jul 2008] |
| Function | Cell-surface glycoprotein having a role in immunoadhesion. Mediates in the adhesion of blood neutrophils in cytokine-activated endothelium through interaction with PSGL1/SELPLG. May have a role in capillary morphogenesis. [UniProt] |
| Calculated Mw | 67 kDa |

Images



ARG66977 anti-CD62E / E-Selectin antibody IHC-P image

Immunohistochemistry: Paraffin-embedded Human umbilical cord tissue stained with ARG66977 anti-CD62E / E-Selectin antibody at 1:100 dilution. Antigen Retrieval: Boil tissue section in Citrate buffer (pH 6.0).



ARG66977 anti-CD62E / E-Selectin antibody WB image

Western blot: 50 µg of Human umbilical cord and Human Placenta (negative control) tissue lysate stained with ARG66977 anti-CD62E / E-Selectin antibody at 1:1000 dilution, overnight at 4°C.