

## ARG66942 anti-NUT / NUTM1 antibody [SQab22272]

Package: 100 µl, 50 µl  
Store at: -20°C

### Summary

Product Description	Recombinant Rabbit Monoclonal antibody [SQab22272] recognizes NUT / NUTM1
Tested Reactivity	Hu
Tested Application	IHC-P
Host	Rabbit
Clonality	Monoclonal
Clone	SQab22272
Isotype	IgG
Target Name	NUT / NUTM1
Species	Human
Immunogen	A synthetic peptide corresponding to the sequence of Human NUT / NUTM1.
Conjugation	Un-conjugated
Alternate Names	NUT; FAM22H; C15orf55; Nuclear protein in testis; NUT family member 1

### Application Instructions

Application table	Application	Dilution
	IHC-P	1:100 - 1:200
Application Note	IHC-P: Antigen Retrieval: Heat mediated was performed using Tris/EDTA buffer (pH 9.0). Incubate the samples at RT (18-25°C) for 30 min. * The dilutions indicate recommended starting dilutions and the optimal dilutions or concentrations should be determined by the scientist.	
Positive Control	Human testis tissue	

### Properties

Form	Liquid
Purification	Purification with Protein A.
Buffer	PBS, 0.01% Sodium azide, 40% Glycerol and 0.05%BSA.
Preservative	0.01% Sodium azide
Stabilizer	40% Glycerol and 0.05%BSA
Storage instruction	For continuous use, store undiluted antibody at 2-8°C for up to a week. For long-term storage, aliquot and store at -20°C or below. Storage in frost free freezers is not recommended. Avoid repeated freeze/thaw cycles. Suggest spin the vial prior to opening. The antibody solution should be gently mixed before use.
Note	For laboratory research only, not for drug, diagnostic or other use.

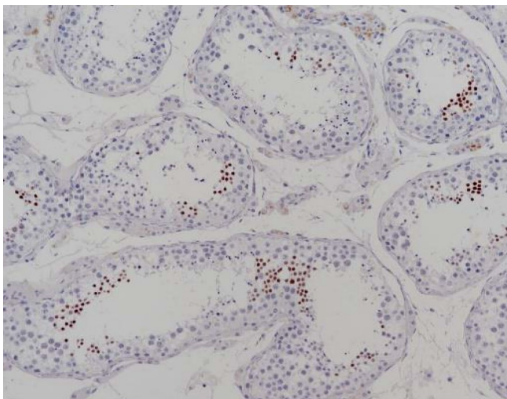
## Bioinformation

---

Gene Symbol	NUTM1
Gene Full Name	NUT midline carcinoma family member 1
Background	Predicted to be located in cytoplasm and nucleus. [provided by Alliance of Genome Resources, Apr 2022]
Function	Plays a role in the regulation of proliferation. Regulates TERT expression by modulating SP1 binding to TERT promoter binding sites. [provide by uniprot]
Calculated Mw	120.3 kDa
PTM	Methylation, Phosphoprotein; Methylated at Gln-1046 by N6AMT1.1 Phosphorylation on Ser-1026, Ser-1029 or Ser-1031 is important for cytoplasmic export.
Cellular Localization	Cytoplasm, Nucleus

## Images

---



ARG66942 anti-NUT / NUTM1 antibody [SQab22272] IHC-P image

Immunohistochemistry: Formalin/PFA-fixed and paraffin-embedded sections of Human testis tissue stained with ARG66942 anti-NUT / NUTM1 antibody [SQab22272]. Antigen Retrieval: Heat tissue section in Tris-EDTA buffer (pH 9.0).