

ARG66936
anti-TROP2 antibody [SQab22266]Package: 100 µl, 50 µl
Store at: -20°C

Summary

Product Description	Recombinant Rabbit Monoclonal antibody [SQab22266] recognizes TROP2
Tested Reactivity	Hu
Tested Application	IHC-P
Host	Rabbit
Clonality	Monoclonal
Clone	SQab22266
Isotype	IgG
Target Name	TROP2
Species	Human
Immunogen	A synthetic peptide corresponding to the sequence of Human TROP2.
Conjugation	Un-conjugated
Alternate Names	Membrane component chromosome 1 surface marker 1; M1S1; Cell surface glycoprotein Trop-2; TROP2; EGP-1; EGP1; Tumor-associated calcium signal transducer 2; GA733-1; Pancreatic carcinoma marker protein GA733-1; GA7331; GP50

Application Instructions

Application table	Application	Dilution
	IHC-P	1:100 - 1:200
Application Note	IHC-P: Antigen Retrieval: Heat mediated was performed using Tris/EDTA buffer (pH 9.0). Incubate the samples at RT (18-25°C) for 30 min. * The dilutions indicate recommended starting dilutions and the optimal dilutions or concentrations should be determined by the scientist.	
Positive Control	human esophageal carcinoma tissue	

Properties

Form	Liquid
Purification	Purification with Protein A.
Buffer	PBS, 0.01% Sodium azide, 40% Glycerol and 0.05%BSA.
Preservative	0.01% Sodium azide
Stabilizer	40% Glycerol and 0.05%BSA
Storage instruction	For continuous use, store undiluted antibody at 2-8°C for up to a week. For long-term storage, aliquot and store at -20°C or below. Storage in frost free freezers is not recommended. Avoid repeated freeze/thaw cycles. Suggest spin the vial prior to opening. The antibody solution should be gently mixed before use.

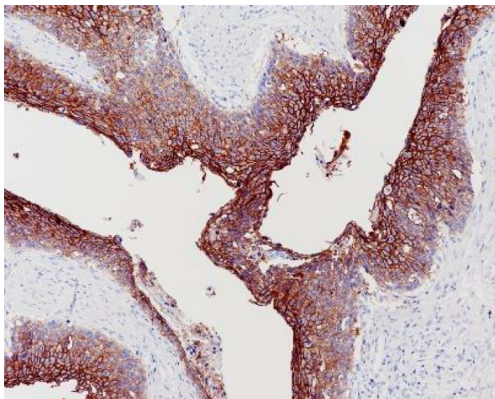
Note

For laboratory research only, not for drug, diagnostic or other use.

Bioinformation

Gene Symbol	TACSTD2
Gene Full Name	tumor-associated calcium signal transducer 2
Background	This intronless gene encodes a carcinoma-associated antigen. This antigen is a cell surface receptor that transduces calcium signals. Mutations of this gene have been associated with gelatinous drop-like corneal dystrophy.[provided by RefSeq, Dec 2009]
Function	May function as a growth factor receptor. [UniProt]
Calculated Mw	36 kDa
PTM	The N-terminus is blocked. [UniProt]

Images



ARG66936 anti-TROP2 antibody [SQab22266] IHC-P image

Immunohistochemistry: Formalin/PFA-fixed and paraffin-embedded sections of human esophageal carcinoma tissue stained with ARG66936 anti-TROP2 antibody [SQab22266]. Antigen Retrieval: Heat tissue section in Tris-EDTA buffer (pH 9.0).