

## ARG66930 anti-CD223 / LAG3 antibody [SQab22258]

Package: 100 µl, 50 µl  
Store at: -20°C

### Summary

Product Description	Recombinant Rabbit Monoclonal antibody [SQab22258] recognizes CD223 / LAG3
Tested Reactivity	Hu
Tested Application	IHC-P
Host	Rabbit
Clonality	Monoclonal
Clone	SQab22258
Isotype	IgG
Target Name	CD223 / LAG3
Species	Human
Immunogen	Synthetic peptide within Human LAG-3.
Conjugation	Un-conjugated
Alternate Names	CD antigen CD223; CD223; Protein FDC; Lymphocyte activation gene 3 protein; LAG-3

### Application Instructions

Application table	Application	Dilution
	IHC-P	1:100 - 1:200
Application Note	IHC-P: Antigen Retrieval: Heat mediated was performed using Tris/EDTA buffer (pH 9.0). Incubate the samples at RT (18-25°C) for 30 min. * The dilutions indicate recommended starting dilutions and the optimal dilutions or concentrations should be determined by the scientist.	
Positive Control	Human lymphoma tissue	

### Properties

Form	Liquid
Purification	Purification with Protein A.
Buffer	PBS, 0.01% Sodium azide, 40% Glycerol and 0.05%BSA.
Preservative	0.01% Sodium azide
Stabilizer	40% Glycerol and 0.05%BSA
Storage instruction	For continuous use, store undiluted antibody at 2-8°C for up to a week. For long-term storage, aliquot and store at -20°C or below. Storage in frost free freezers is not recommended. Avoid repeated freeze/thaw cycles. Suggest spin the vial prior to opening. The antibody solution should be gently mixed before use.
Note	For laboratory research only, not for drug, diagnostic or other use.

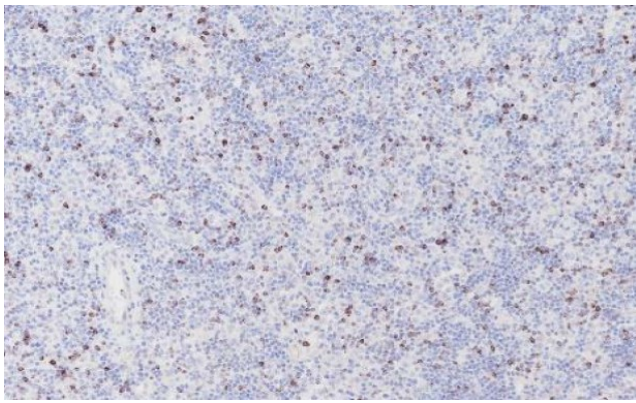
## Bioinformation

---

Gene Symbol	LAG3
Gene Full Name	lymphocyte-activation gene 3
Background	Lymphocyte-activation protein 3 belongs to Ig superfamily and contains 4 extracellular Ig-like domains. The LAG3 gene contains 8 exons. The sequence data, exon/intron organization, and chromosomal localization all indicate a close relationship of LAG3 to CD4. [provided by RefSeq, Jul 2008]
Function	Involved in lymphocyte activation. Binds to HLA class-II antigens. [UniProt]
Calculated Mw	57 kDa
Cellular Localization	Membrane, Single-pass type I membrane protein. [UniProt]

## Images

---



ARG66930 anti-CD223 / LAG3 antibody [SQab22258] IHC-P image

Immunohistochemistry: Formalin/PFA-fixed and paraffin-embedded sections of Human lymphoma tissue stained with ARG66930 anti-CD223 / LAG3 antibody [SQab22258]. Antigen Retrieval: Heat tissue section in Tris-EDTA buffer (pH 9.0).