

## ARG66928 anti-hCG beta antibody [SQab22256]

Package: 100 µl, 50 µl  
Store at: -20°C

### Summary

Product Description	Recombinant Rabbit Monoclonal antibody [SQab22256] recognizes hCG beta
Tested Reactivity	Hu
Tested Application	IHC-P
Host	Rabbit
Clonality	Monoclonal
Clone	SQab22256
Isotype	IgG
Target Name	hCG beta
Species	Human
Immunogen	Full length protein corresponding to Human hCG beta.
Conjugation	Un-conjugated
Alternate Names	hCGB; CGB5; CGB7; CGB3; Chorionic gonadotrophin chain beta; CGB8; CG-beta; Choriogonadotropin subunit beta

### Application Instructions

Application table	Application	Dilution
	IHC-P	1:100 - 1:200
Application Note	IHC-P: Antigen Retrieval: Heat mediated was performed using Tris/EDTA buffer (pH 9.0). Incubate the samples at RT (18-25°C) for 30 min. * The dilutions indicate recommended starting dilutions and the optimal dilutions or concentrations should be determined by the scientist.	
Positive Control	Human placenta tissue	

### Properties

Form	Liquid
Purification	Purification with Protein A.
Buffer	PBS, 0.01% Sodium azide, 40% Glycerol and 0.05%BSA.
Preservative	0.01% Sodium azide
Stabilizer	40% Glycerol and 0.05%BSA
Storage instruction	For continuous use, store undiluted antibody at 2-8°C for up to a week. For long-term storage, aliquot and store at -20°C or below. Storage in frost free freezers is not recommended. Avoid repeated freeze/thaw cycles. Suggest spin the vial prior to opening. The antibody solution should be gently mixed before use.

Note For laboratory research only, not for drug, diagnostic or other use.

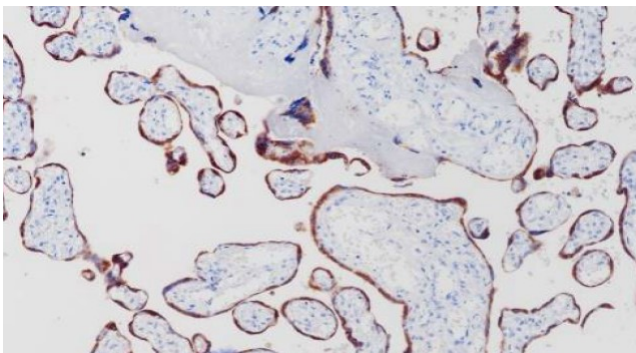
## Bioinformation

---

Gene Symbol	CGB
Gene Full Name	chorionic gonadotropin, beta polypeptide
Background	This gene is a member of the glycoprotein hormone beta chain family and encodes the beta 3 subunit of chorionic gonadotropin (CG). Glycoprotein hormones are heterodimers consisting of a common alpha subunit and an unique beta subunit which confers biological specificity. CG is produced by the trophoblastic cells of the placenta and stimulates the ovaries to synthesize the steroids that are essential for the maintenance of pregnancy. The beta subunit of CG is encoded by 6 genes which are arranged in tandem and inverted pairs on chromosome 19q13.3 and contiguous with the luteinizing hormone beta subunit gene. [provided by RefSeq, Jul 2008]
Function	Stimulates the ovaries to synthesize the steroids that are essential for the maintenance of pregnancy. [UniProt]
Research Area	Cancer antibody; Metabolism antibody; Neuroscience antibody; Signaling Transduction antibody
Calculated Mw	18 kDa
Cellular Localization	Secreted. [UniProt]

## Images

---



ARG66928 anti-hCG beta antibody [SQab22256] IHC-P image

Immunohistochemistry: Formalin/PFA-fixed and paraffin-embedded sections of Human placenta tissue stained with ARG66928 anti-hCG beta antibody [SQab22256]. Antigen Retrieval: Heat tissue section in Tris-EDTA buffer (pH 9.0).