

ARG66898 anti-SLCO1A2 / OATP1A2 antibody

Package: 100 µl
Store at: -20°C

Summary

| | |
|---------------------|---|
| Product Description | Rabbit Polyclonal antibody recognizes SLCO1A2 / OATP1A2 |
| Tested Reactivity | Hu |
| Tested Application | WB |
| Host | Rabbit |
| Clonality | Polyclonal |
| Isotype | IgG |
| Target Name | SLCO1A2 / OATP1A2 |
| Species | Human |
| Immunogen | Synthetic peptide between aa. 251-300 of Human SLCO1A2 / OATP1A2. |
| Conjugation | Un-conjugated |
| Alternate Names | OATP-A; Organic anion-transporting polypeptide 1; OATP1A2; OATP; Sodium-independent organic anion transporter; SLC21A3; OATP-1; Solute carrier organic anion transporter family member 1A2; Solute carrier family 21 member 3 |

Application Instructions

| Application table | Application | Dilution |
|-------------------|--|----------------|
| | WB | 1:500 - 1:2000 |
| Application Note | * The dilutions indicate recommended starting dilutions and the optimal dilutions or concentrations should be determined by the scientist. | |
| Positive Control | HeLa, A549, AD293 and HepG2 | |
| Observed Size | 70-75 kDa | |

Properties

| | |
|---------------------|---|
| Form | Liquid |
| Purification | Affinity purification with immunogen. |
| Buffer | PBS, 0.02% Sodium azide, 50% Glycerol and 0.5% BSA. |
| Preservative | 0.02% Sodium azide |
| Stabilizer | 50% Glycerol and 0.5% BSA |
| Concentration | 1 mg/ml |
| Storage instruction | For continuous use, store undiluted antibody at 2-8°C for up to a week. For long-term storage, aliquot and store at -20°C. Storage in frost free freezers is not recommended. Avoid repeated freeze/thaw cycles. Suggest spin the vial prior to opening. The antibody solution should be gently mixed before use. |

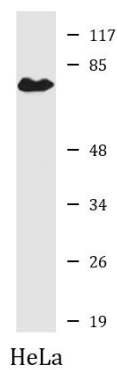
Note

For laboratory research only, not for drug, diagnostic or other use.

Bioinformation

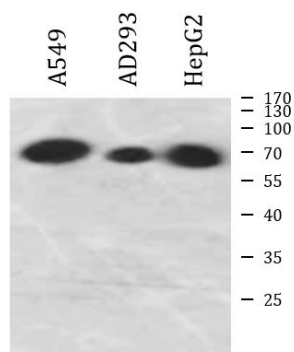
| | |
|-----------------------|---|
| Gene Symbol | SLCO1A2 |
| Gene Full Name | solute carrier organic anion transporter family, member 1A2 |
| Background | This gene encodes a sodium-independent transporter which mediates cellular uptake of organic ions in the liver. Its substrates include bile acids, bromosulphophthalein, and some steroidal compounds. The protein is a member of the SLC21A family of solute carriers. Alternative splicing of this gene results in multiple transcript variants. [provided by RefSeq, Dec 2008] |
| Function | Mediates the Na(+)-independent transport of organic anions such as sulfobromophthalein (BSP) and conjugated (taurocholate) and unconjugated (cholate) bile acids (By similarity). Selectively inhibited by the grapefruit juice component naringin. [UniProt] |
| Calculated Mw | 74 kDa |
| Cellular Localization | Cell membrane; Multi-pass membrane protein. [UniProt] |

Images



ARG66898 anti-SLCO1A2 / OATP1A2 antibody WB image

Western blot: HeLa cell lysate stained with ARG66898 anti-SLCO1A2 / OATP1A2 antibody at 1:2000 dilution.



ARG66898 anti-SLCO1A2 / OATP1A2 antibody WB image

Western blot: A549, AD293 and HepG2 cell lysates stained with ARG66898 anti-SLCO1A2 / OATP1A2 antibody at 1:2000 dilution.