

ARG66885 anti-ANGPTL7 antibody

Package: 100 µg
Store at: -20°C

Summary

Product Description	Rabbit Polyclonal antibody recognizes ANGPTL7
Tested Reactivity	Hu
Tested Application	WB
Host	Rabbit
Clonality	Polyclonal
Isotype	IgG
Target Name	ANGPTL7
Species	Human
Immunogen	Synthetic peptide corresponding to aa. 297-346 of Human ANGPTL7.
Conjugation	Un-conjugated
Alternate Names	dJ647M16.1; CDT6; Cornea-derived transcript 6 protein; Angiotensin-like factor; Angiotensin-related protein 7; Angiotensin-like protein 7; AngX

Application Instructions

Application table	Application	Dilution
	WB	1:500 - 1:2000
Application Note	* The dilutions indicate recommended starting dilutions and the optimal dilutions or concentrations should be determined by the scientist.	
Observed Size	40 ~ 50 kDa	

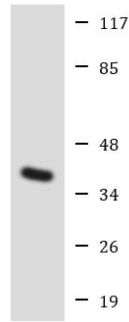
Properties

Form	Liquid
Purification	Affinity purification with immunogen.
Buffer	PBS, 0.02% Sodium azide, 50% Glycerol and 0.5% BSA.
Preservative	0.02% Sodium azide
Stabilizer	50% Glycerol and 0.5% BSA
Storage instruction	For continuous use, store undiluted antibody at 2-8°C for up to a week. For long-term storage, aliquot and store at -20°C. Storage in frost free freezers is not recommended. Avoid repeated freeze/thaw cycles. Suggest spin the vial prior to opening. The antibody solution should be gently mixed before use.
Note	For laboratory research only, not for drug, diagnostic or other use.

Bioinformation

Gene Symbol	ANGPTL7
Gene Full Name	angiopoietin-like 7
Calculated Mw	40 kDa
Cellular Localization	Secreted. [UniProt]

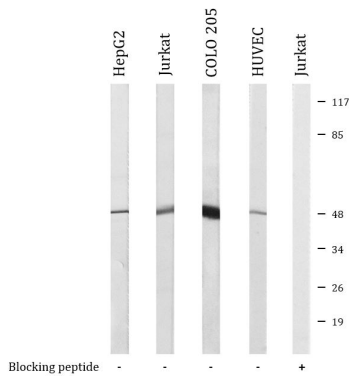
Images



HeLa

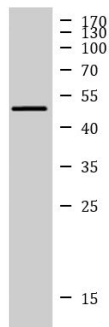
ARG66885 anti-ANGPTL7 antibody WB image

Western blot: HeLa cell lysate stained with ARG66885 anti-ANGPTL7 antibody.



ARG66885 anti-ANGPTL7 antibody WB image

Western blot: HepG2, Jurkat, COLO 205 and HUVEC cell lysates stained with ARG66885 anti-ANGPTL7 antibody. The lane on the right is blocked with the synthetic peptide.



SH-SY5Y

ARG66885 anti-ANGPTL7 antibody WB image

Western blot: SH-SY5Y cell lysate stained with ARG66885 anti-ANGPTL7 antibody at 1:2000 dilution.