

## ARG66881 anti-TFE3 antibody [SQab21248]

Package: 100 µl  
Store at: -20°C

### Summary

Product Description	Recombinant Rabbit Monoclonal antibody [SQab21248] recognizes TFE3
Tested Reactivity	Hu
Tested Application	IHC-P
Host	Rabbit
Clonality	Monoclonal
Clone	SQab21248
Isotype	IgG
Target Name	TFE3
Species	Human
Immunogen	Synthetic peptide of Human TFE3.
Conjugation	Un-conjugated
Alternate Names	bHLHe33; TFEA; Class E basic helix-loop-helix protein 33; Transcription factor E3; RCCX1; RCCP2

### Application Instructions

Application table	Application	Dilution
	IHC-P	1:100 - 1:200
Application Note	IHC-P: Antigen Retrieval: Heat mediation was performed in Tris/EDTA buffer (pH 9.0). * The dilutions indicate recommended starting dilutions and the optimal dilutions or concentrations should be determined by the scientist.	

### Properties

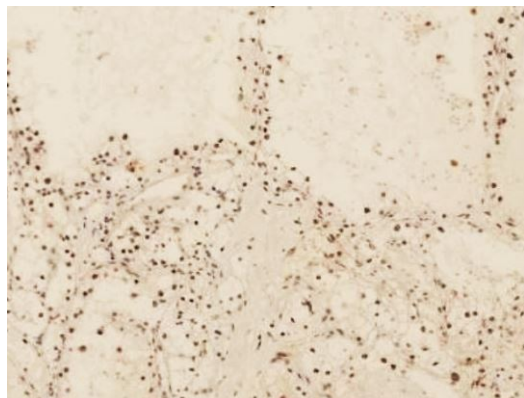
Form	Liquid
Purification	Purification with Protein A.
Buffer	PBS, 0.01% Sodium azide, 40% Glycerol and 0.05% BSA.
Preservative	0.01% Sodium azide
Stabilizer	40% Glycerol and 0.05% BSA
Storage instruction	For continuous use, store undiluted antibody at 2-8°C for up to a week. For long-term storage, aliquot and store at -20°C. Storage in frost free freezers is not recommended. Avoid repeated freeze/thaw cycles. Suggest spin the vial prior to opening. The antibody solution should be gently mixed before use.
Note	For laboratory research only, not for drug, diagnostic or other use.

### Bioinformation

Gene Symbol	TFE3
Gene Full Name	transcription factor binding to IGHM enhancer 3
Function	Transcription factor that specifically recognizes and binds E-box sequences (5'-CANNTG-3') (By similarity). Efficient DNA-binding requires dimerization with itself or with another MiT/TFE family member such as TFEB or MITF (By similarity). In association with TFEB, activates the expression of CD40L in T-cells, thereby playing a role in T-cell-dependent antibody responses in activated CD4(+) T-cells and thymus-dependent humoral immunity (By similarity). Specifically recognizes the MUE3 box, a subset of E-boxes, present in the immunoglobulin enhancer (PubMed:2338243). It also binds very well to a USF/MLTF site (PubMed:2338243). May regulate lysosomal positioning in response to nutrient deprivation by promoting the expression of PIP4P1 (PubMed:29146937). [UniProt]
Calculated Mw	62 kDa
PTM	Sumoylated; does not affect dimerization with MITF. [UniProt]
Cellular Localization	Nucleus. [UniProt]

## Images

---



ARG66881 anti-TFE3 antibody [SQab21248] IHC-P image

Immunohistochemistry: Formalin-fixed and paraffin-embedded Human renal cell carcinoma tissue. Antigen Retrieval: Heat mediation was performed in Tris/EDTA buffer (pH 9.0). The tissue section was stained with ARG66881 anti-TFE3 antibody [SQab21248] for 30 min at RT.