

## ARG66865 anti-PEA15 antibody

Package: 100 µg  
Store at: -20°C

### Summary

Product Description	Rabbit Polyclonal antibody recognizes PEA15
Tested Reactivity	Hu
Predict Reactivity	Ms, Rat
Tested Application	IHC-P, WB
Host	Rabbit
Clonality	Polyclonal
Isotype	IgG
Target Name	PEA15
Species	Human
Immunogen	Synthetic peptide corresponding to aa. 70-119 of Human PEA15.
Conjugation	Un-conjugated
Alternate Names	MAT1H; MAT1; Astrocytic phosphoprotein PEA-15; HUMMAT1H; 15 kDa phosphoprotein enriched in astrocytes; PED; PEA-15; Phosphoprotein enriched in diabetes; HMAT1

### Application Instructions

Application table	Application	Dilution
	IHC-P	1:100 - 1:300
	WB	1:500 - 1:2000
Application Note	* The dilutions indicate recommended starting dilutions and the optimal dilutions or concentrations should be determined by the scientist.	
Positive Control	Jurkat	
Observed Size	~ 15 kDa	

### Properties

Form	Liquid
Purification	Affinity purification with immunogen.
Buffer	PBS, 0.02% Sodium azide, 50% Glycerol and 0.5% BSA.
Preservative	0.02% Sodium azide
Stabilizer	50% Glycerol and 0.5% BSA
Concentration	1 mg/ml
Storage instruction	For continuous use, store undiluted antibody at 2-8°C for up to a week. For long-term storage, aliquot and store at -20°C. Storage in frost free freezers is not recommended. Avoid repeated freeze/thaw

cycles. Suggest spin the vial prior to opening. The antibody solution should be gently mixed before use.

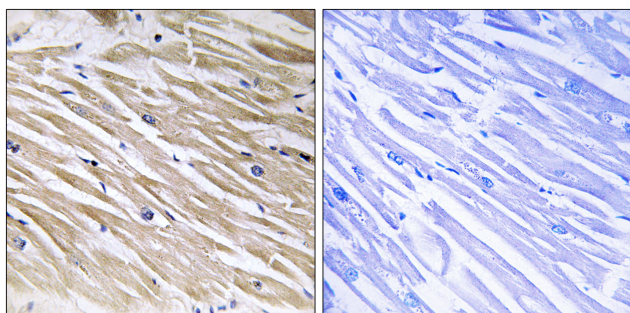
Note

For laboratory research only, not for drug, diagnostic or other use.

## Bioinformation

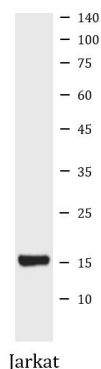
Gene Symbol	PEA15
Gene Full Name	phosphoprotein enriched in astrocytes 15
Background	This gene encodes a death effector domain-containing protein that functions as a negative regulator of apoptosis. The encoded protein is an endogenous substrate for protein kinase C. This protein is also overexpressed in type 2 diabetes mellitus, where it may contribute to insulin resistance in glucose uptake. Alternative splicing results in multiple transcript variants. [provided by RefSeq, Jul 2014]
Function	Blocks Ras-mediated inhibition of integrin activation and modulates the ERK MAP kinase cascade. Inhibits RPS6KA3 activities by retaining it in the cytoplasm (By similarity). Inhibits both TNFRSF6- and TNFRSF1A-mediated CASP8 activity and apoptosis. Regulates glucose transport by controlling both the content of SLC2A1 glucose transporters on the plasma membrane and the insulin-dependent trafficking of SLC2A4 from the cell interior to the surface. [UniProt]
Calculated Mw	15 kDa
PTM	Phosphorylated by protein kinase C and calcium-calmodulin-dependent protein kinase. These phosphorylation events are modulated by neurotransmitters or hormones. [UniProt]
Cellular Localization	Cytoplasm. Note=Associated with microtubules. [UniProt]

## Images



ARG66865 anti-PEA15 antibody IHC-P image

Immunohistochemistry: Paraffin-embedded Human heart tissue stained with ARG66865 anti-PEA15 antibody. The picture on the right is blocked with the synthetic peptide.



ARG66865 anti-PEA15 antibody WB image

Western blot: Jarkat cell lysate stained with ARG66865 anti-PEA15 antibody at 1:1000 dilution, overnight at 4°C.