

## ARG66864 anti-NSE / Neuron Specific Enolase antibody

Package: 100 µg  
Store at: -20°C

### Summary

Product Description	Rabbit Polyclonal antibody recognizes NSE / Neuron Specific Enolase
Tested Reactivity	Hu
Predict Reactivity	Ms, Rat
Tested Application	ICC/IF, IHC-P, WB
Host	Rabbit
Clonality	Polyclonal
Isotype	IgG
Target Name	NSE / Neuron Specific Enolase
Species	Human
Immunogen	Synthetic peptide corresponding to aa. 371-420 of Human NSE / Neuron Specific Enolase.
Conjugation	Un-conjugated
Alternate Names	Neural enolase; NSE; Enolase 2; Gamma-enolase; 2-phospho-D-glycerate hydro-lyase; HEL-S-279; Neuron-specific enolase; EC 4.2.1.11

### Application Instructions

Application table	Application	Dilution
	ICC/IF	1:200 - 1:1000
	IHC-P	1:100 - 1:300
	WB	1:500 - 1:2000
Application Note	* The dilutions indicate recommended starting dilutions and the optimal dilutions or concentrations should be determined by the scientist.	
Positive Control	HepG2	
Observed Size	~ 48 kDa	

### Properties

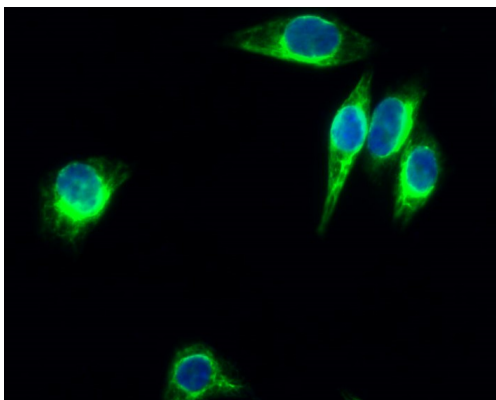
Form	Liquid
Purification	Affinity purification with immunogen.
Buffer	PBS, 0.02% Sodium azide, 50% Glycerol and 0.5% BSA.
Preservative	0.02% Sodium azide
Stabilizer	50% Glycerol and 0.5% BSA
Concentration	1 mg/ml

<b>Storage instruction</b>	For continuous use, store undiluted antibody at 2-8°C for up to a week. For long-term storage, aliquot and store at -20°C. Storage in frost free freezers is not recommended. Avoid repeated freeze/thaw cycles. Suggest spin the vial prior to opening. The antibody solution should be gently mixed before use.
<b>Note</b>	For laboratory research only, not for drug, diagnostic or other use.

## Bioinformation

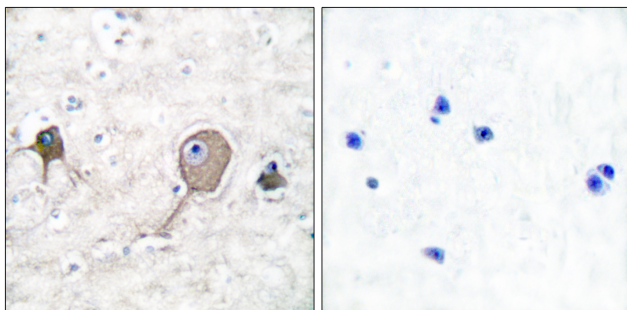
<b>Gene Symbol</b>	ENO2
<b>Gene Full Name</b>	enolase 2 (gamma, neuronal)
<b>Background</b>	This gene encodes one of the three enolase isoenzymes found in mammals. This isoenzyme, a homodimer, is found in mature neurons and cells of neuronal origin. A switch from alpha enolase to gamma enolase occurs in neural tissue during development in rats and primates. [provided by RefSeq, Jul 2008]
<b>Function</b>	Has neurotrophic and neuroprotective properties on a broad spectrum of central nervous system (CNS) neurons. Binds, in a calcium-dependent manner, to cultured neocortical neurons and promotes cell survival (By similarity). [UniProt]
<b>Calculated Mw</b>	47 kDa
<b>Cellular Localization</b>	Cytoplasm. Cell membrane. Note=Can translocate to the plasma membrane in either the homodimeric (alpha/alpha) or heterodimeric (alpha/gamma) form. [UniProt]

## Images



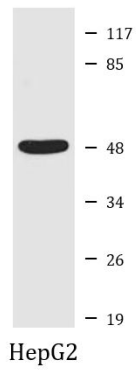
ARG66864 anti-NSE / Neuron Specific Enolase antibody ICC/IF image

Immunofluorescence: HeLa cells stained with ARG66864 anti-NSE / Neuron Specific Enolase antibody (green) at 1:200 dilution, overnight at 4°C. DAPI (blue) for nuclear staining.



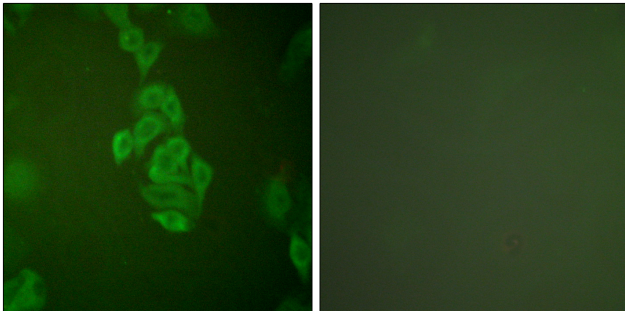
ARG66864 anti-NSE / Neuron Specific Enolase antibody IHC-P image

Immunohistochemistry: Paraffin-embedded Human brain tissue stained with ARG66864 anti-NSE / Neuron Specific Enolase antibody. The picture on the right is blocked with the synthetic peptide.



ARG66864 anti-NSE / Neuron Specific Enolase antibody WB image

Western blot: HepG2 cell lysate stained with ARG66864 anti-NSE / Neuron Specific Enolase antibody at 1:2000 dilution.



ARG66864 anti-NSE / Neuron Specific Enolase antibody ICC/IF image

Immunofluorescence: A549 cells stained with ARG66864 anti-NSE / Neuron Specific Enolase antibody. The picture on the right is blocked with the synthetic peptide.